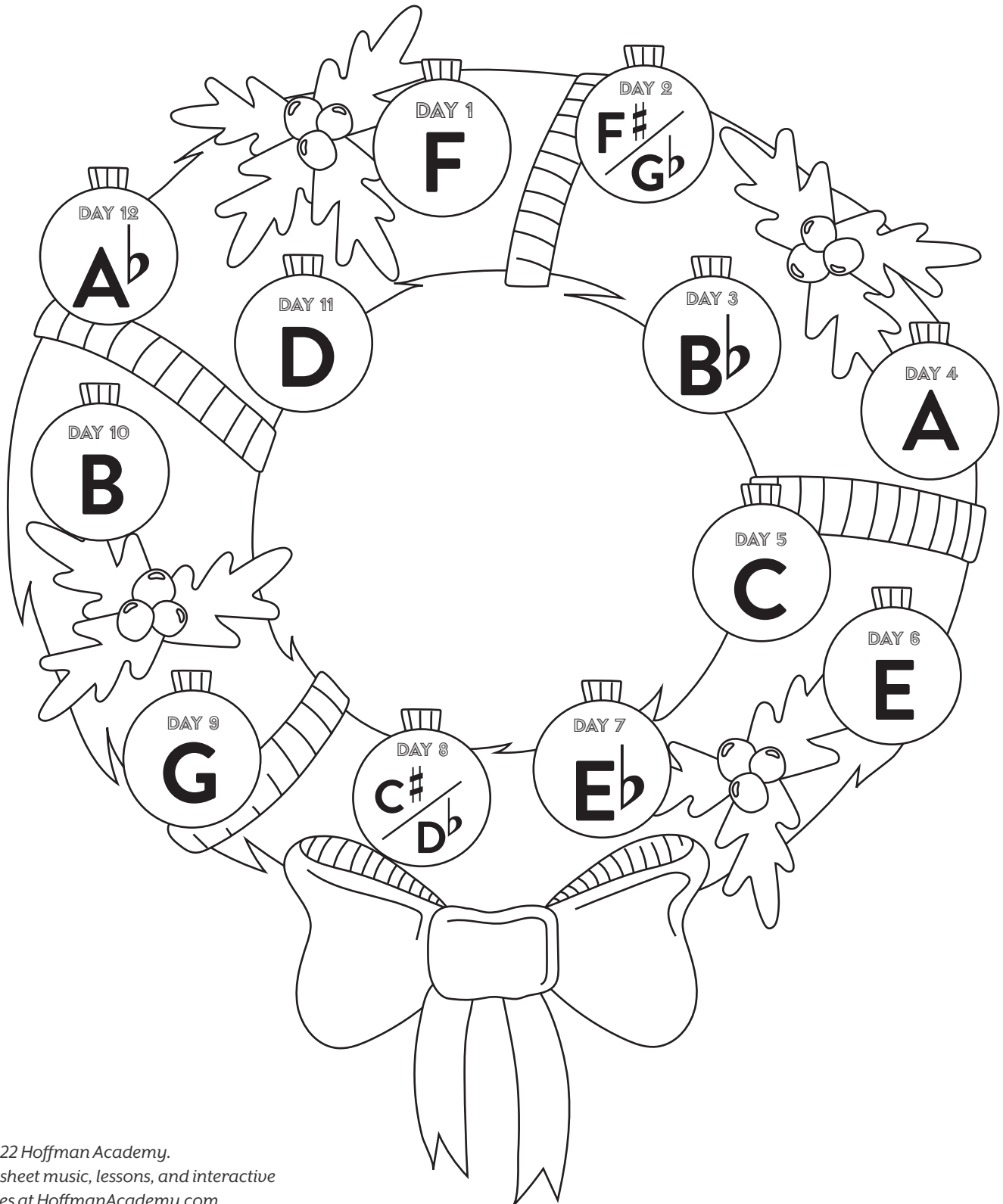


12 Days Pentascale Wreath

Elementary // Units 5–8

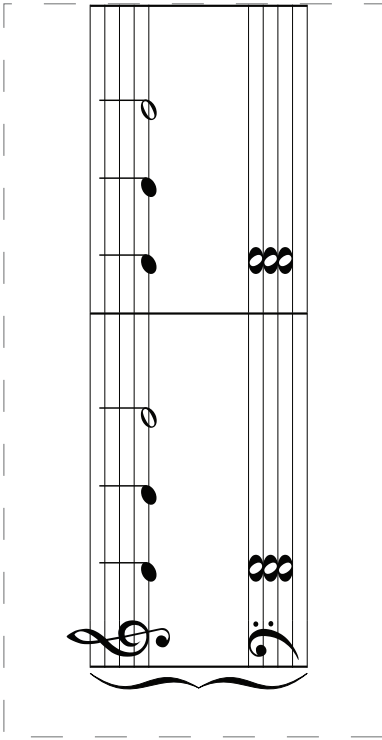
Play all pentascales, major and minor!



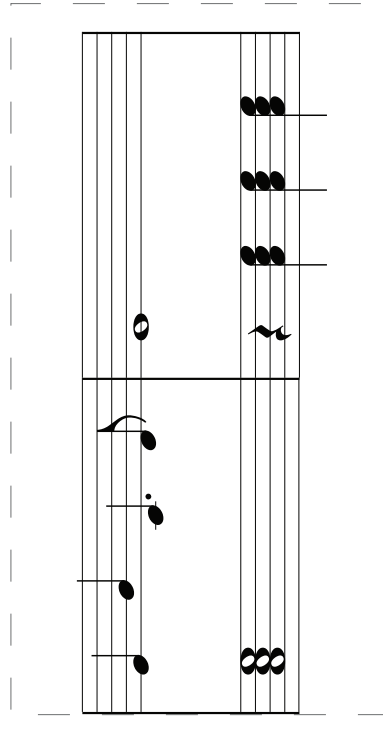
Jingle Bells Puzzle

Elementary // Units 5 - 8

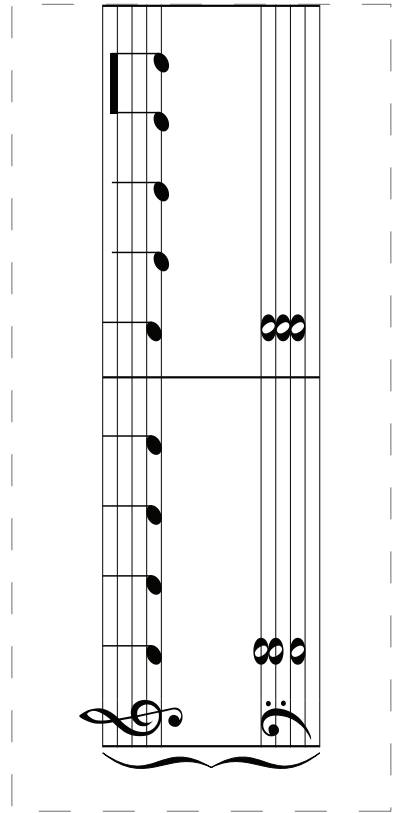
Cut out each piece of the Jingle Bells puzzle. Put them in their proper order. Or, make your own version of Jingle Bells by mixing them up!



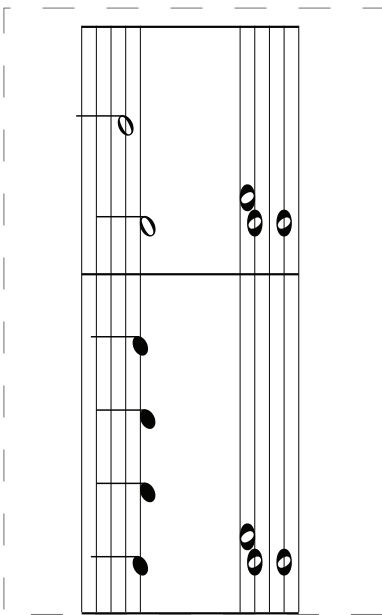
A musical puzzle piece consisting of two staves. The top staff has a treble clef and contains a quarter note on G4, a quarter note on A4, and a quarter note on B4. The bottom staff has a bass clef and contains a quarter note on G3, a quarter note on A3, and a quarter note on B3. There are two sets of three eighth notes on the right side of each staff, one on the top staff and one on the bottom staff.



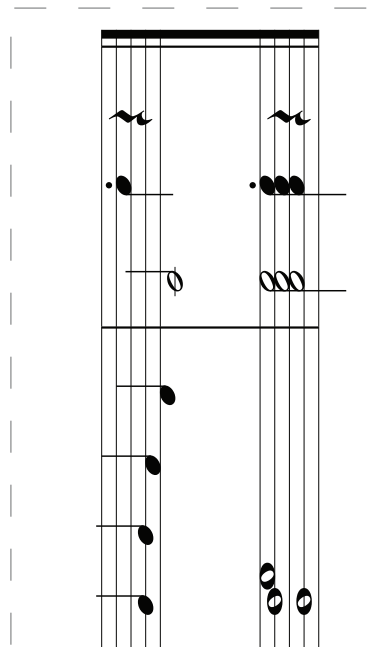
A musical puzzle piece consisting of two staves. The top staff has a treble clef and contains a quarter note on G4, a quarter note on A4, and a quarter note on B4. The bottom staff has a bass clef and contains a quarter note on G3, a quarter note on A3, and a quarter note on B3. There are two sets of three eighth notes on the right side of each staff, one on the top staff and one on the bottom staff.



A musical puzzle piece consisting of two staves. The top staff has a treble clef and contains a quarter note on G4, a quarter note on A4, and a quarter note on B4. The bottom staff has a bass clef and contains a quarter note on G3, a quarter note on A3, and a quarter note on B3. There are two sets of three eighth notes on the right side of each staff, one on the top staff and one on the bottom staff.



A musical puzzle piece consisting of two staves. The top staff has a treble clef and contains a quarter note on G4, a quarter note on A4, and a quarter note on B4. The bottom staff has a bass clef and contains a quarter note on G3, a quarter note on A3, and a quarter note on B3. There are two sets of three eighth notes on the right side of each staff, one on the top staff and one on the bottom staff.



A musical puzzle piece consisting of two staves. The top staff has a treble clef and contains a quarter note on G4, a quarter note on A4, and a quarter note on B4. The bottom staff has a bass clef and contains a quarter note on G3, a quarter note on A3, and a quarter note on B3. There are two sets of three eighth notes on the right side of each staff, one on the top staff and one on the bottom staff.



Musical notation for the first system, featuring a treble clef and a bass clef with a brace underneath. The treble staff contains a sequence of notes: G4, A4, B4, C5, B4, A4, G4. The bass staff contains a sequence of notes: G3, A3, B3, C4, B3, A3, G3. A brace groups both staves. A pair of scissors icon is positioned above the treble staff.

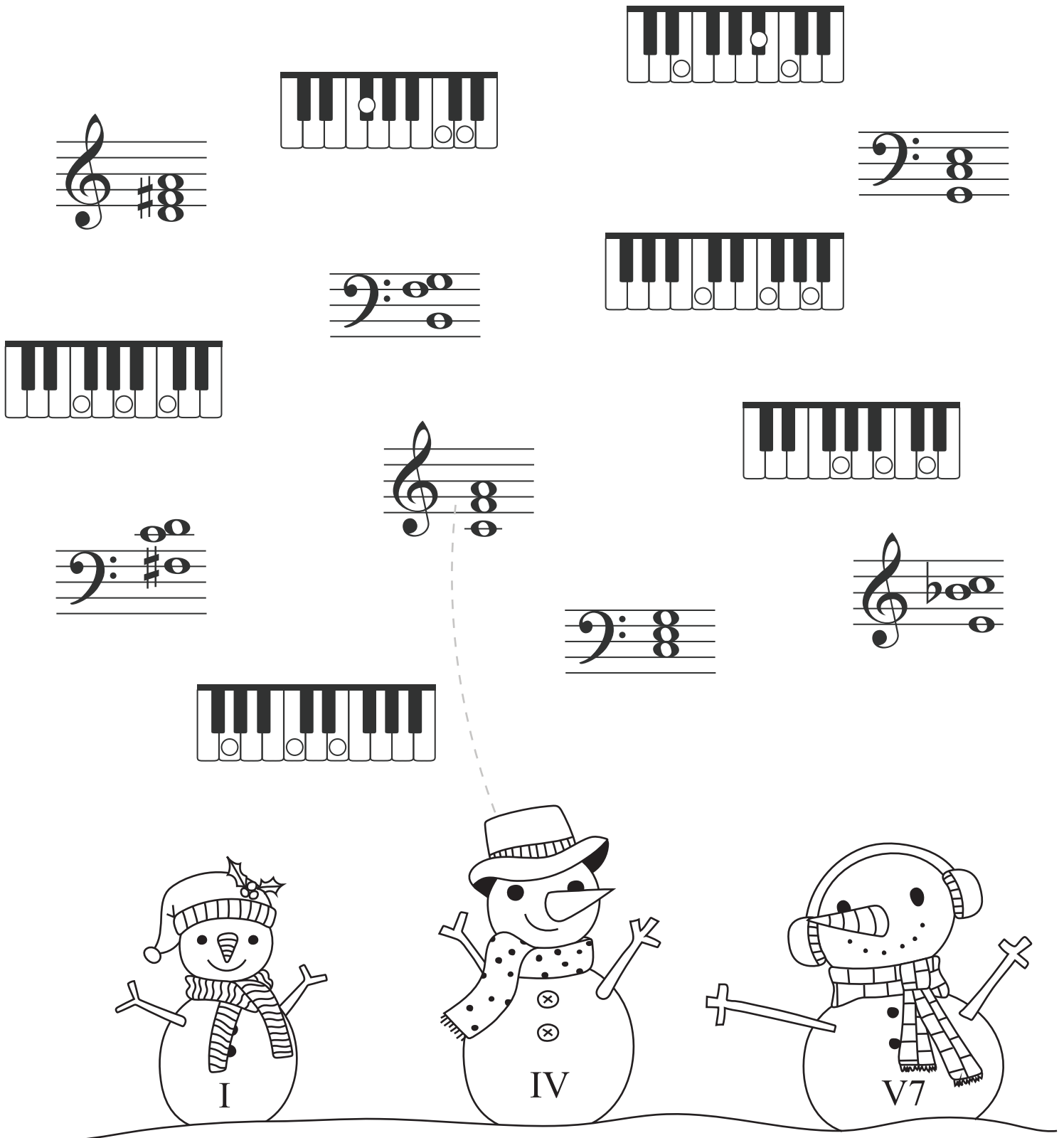
Musical notation for the second system, featuring two staves. The top staff contains a sequence of notes: G4, A4, B4, C5, B4, A4, G4. The bottom staff contains a sequence of notes: G3, A3, B3, C4, B3, A3, G3. A brace groups both staves.

Musical notation for the third system, featuring a treble clef and a bass clef with a brace underneath. The treble staff contains a sequence of notes: G4, A4, B4, C5, B4, A4, G4. The bass staff contains a sequence of notes: G3, A3, B3, C4, B3, A3, G3. A brace groups both staves.

Snowman Chords!

Elementary // Units 5-8

Connect the chords on the staff and keyboards to the correct snowman.



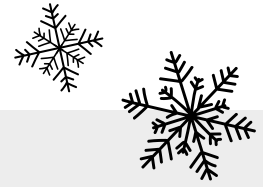
This activity consists of 12 musical chord representations and 3 snowman illustrations. The snowman on the left is labeled 'I', the middle one 'IV', and the right one 'V7'. A dashed line connects the 'IV' snowman to a treble clef staff with a G4 chord.

- Chord 1:** Treble clef, G4 chord (G4, B4, D5).
- Chord 2:** Treble clef, D4 chord (D4, F4, A4).
- Chord 3:** Treble clef, G4 chord (G4, B4, D5).
- Chord 4:** Bass clef, G2 chord (G2, B1, D2).
- Chord 5:** Bass clef, D2 chord (D2, F1, A1).
- Chord 6:** Treble clef, G4 chord (G4, B4, D5).
- Chord 7:** Bass clef, G2 chord (G2, B1, D2).
- Chord 8:** Treble clef, D4 chord (D4, F4, A4).
- Chord 9:** Bass clef, G2 chord (G2, B1, D2).
- Chord 10:** Treble clef, G4 chord (G4, B4, D5).
- Chord 11:** Bass clef, G2 chord (G2, B1, D2).
- Chord 12:** Treble clef, D4 chord (D4, F4, A4).

Christmas Song Note ID

Elementary // Units 5-8

Sight read each line to name these Christmas Carols!



Title: _____



Title: _____



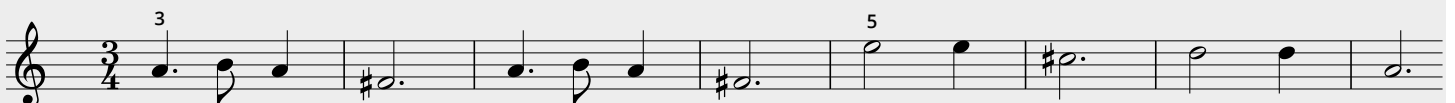
Title: _____



Title: _____

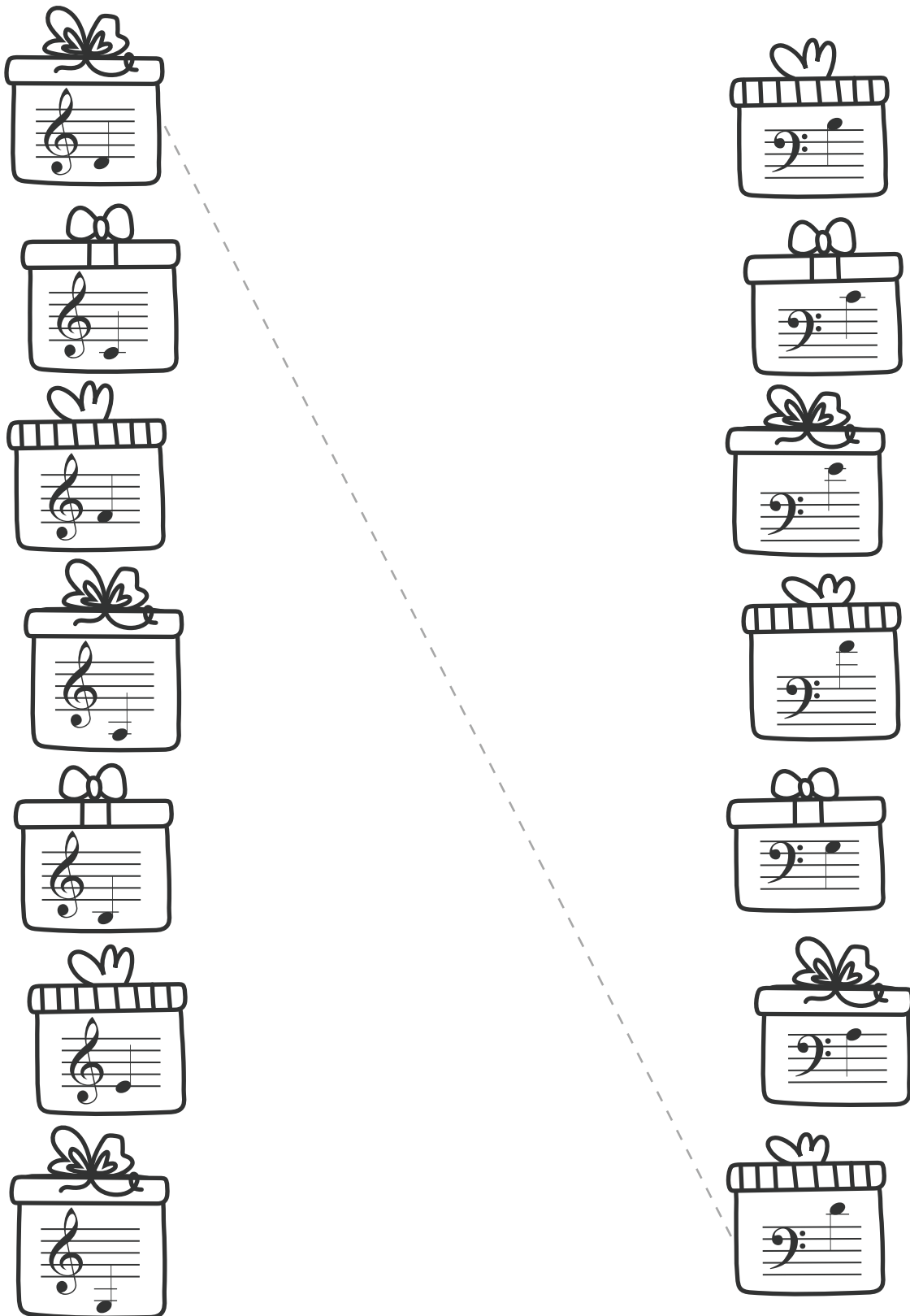


Title: _____



Ledger Line Matching

Elementary // Units 5-8



The image shows a matching exercise with two columns of gift boxes. Each box contains a musical staff with a single note. The left column contains 7 boxes with treble clefs, and the right column contains 7 boxes with bass clefs. A dashed line connects the top box of the left column to the bottom box of the right column.

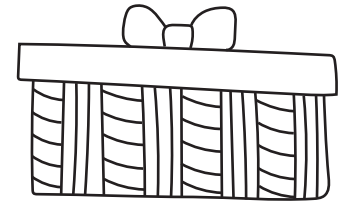
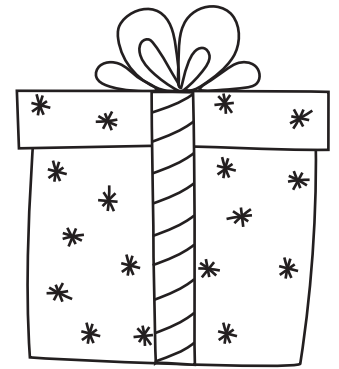
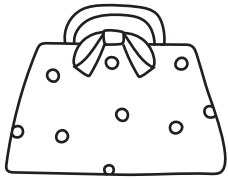
Column	Clef	Note
Left	Treble	G4
Left	Treble	A4
Left	Treble	B4
Left	Treble	C5
Left	Treble	D5
Left	Treble	E5
Left	Treble	F5
Right	Bass	F3
Right	Bass	G3
Right	Bass	A3
Right	Bass	B3
Right	Bass	C4
Right	Bass	D4
Right	Bass	E4

Music Vocabulary Crossword

Elementary // Units 5-8

Word Bank:

- | | | |
|------------|-------------|-------|
| Andante | Moderato | Piano |
| Allegretto | Prestissimo | Forte |
| Allegro | Presto | Tempo |
| Adagio | Largo | |

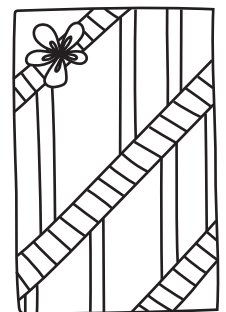
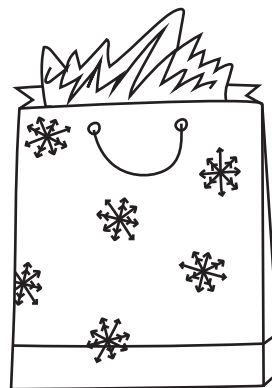


Down:

- ① Slow
- ② As fast as possible
- ③ Very slow
- ④ Fast
- ⑥ Medium slow
- ⑦ Softly
- ⑧ Speed
- ⑨ Loudly

Across:

- ⑤ Medium fast
- ⑦ Very fast
- ⑩ Medium



Answer Key Elementary Christmas Packet

Jingle Bells Puzzle

Elementary // Units 5 - 8

Musical score for 'Jingle Bells' puzzle, elementary level. The score is written in 4/4 time and consists of four systems. Each system contains two staves: a treble clef staff and a bass clef staff. The melody is primarily in the treble clef, while the bass clef provides accompaniment with chords and single notes. The piece concludes with a final chord in the bass clef.

Jingle Bells Puzzle

Intermediate // Units 9 - 13

Musical score for 'Jingle Bells' puzzle, intermediate level. The score is written in 4/4 time and consists of four systems. Each system contains two staves: a treble clef staff and a bass clef staff. The melody is primarily in the treble clef, while the bass clef provides accompaniment with chords and single notes. The piece concludes with a final chord in the bass clef.

Snowman Chords!

Name That Tune

Title: **Deck the Halls**

Title: **Jingle Bells**

Title: **Silver Bells**

Title: **Rudolph the Red Nosed Reindeer**

Title: **Silent Night**

Music Vocabulary Crossword

Word Bank:

Andante	Moderato	Piano
Allegretto	Prestissimo	Forte
Allegro	Presto	Tempo
Adagio	Largo	

Ledger Line Matching

The matching exercise consists of two rows of seven musical staves on ledger lines. Red lines connect the staves to their corresponding counterparts in the other row. The connections are as follows:

- Staff 1 (top row) connects to Staff 7 (bottom row)
- Staff 2 (top row) connects to Staff 6 (bottom row)
- Staff 3 (top row) connects to Staff 5 (bottom row)
- Staff 4 (top row) connects to Staff 4 (bottom row)
- Staff 5 (top row) connects to Staff 3 (bottom row)
- Staff 6 (top row) connects to Staff 2 (bottom row)
- Staff 7 (top row) connects to Staff 1 (bottom row)

The crossword puzzle grid is filled with the following words:

- Across:**
 - 1. ADAGIO
 - 2. PRESTISSIMO
 - 3. LARGO
 - 4. ALLEGRO
 - 5. ALLERGO
 - 6. ANDANTE
 - 9. FORTE
- Down:**
 - 7. PIANO
 - 8. TEMPO
 - 10. MODERATO

Down:

- ① Slow
- ② As fast as possible
- ③ Very slow
- ④ Fast
- ⑥ Medium slow
- ⑦ Softly
- ⑧ Speed
- ⑨ Loudly

Across:

- ⑤ Medium fast
- ⑦ Very fast
- ⑩ Medium