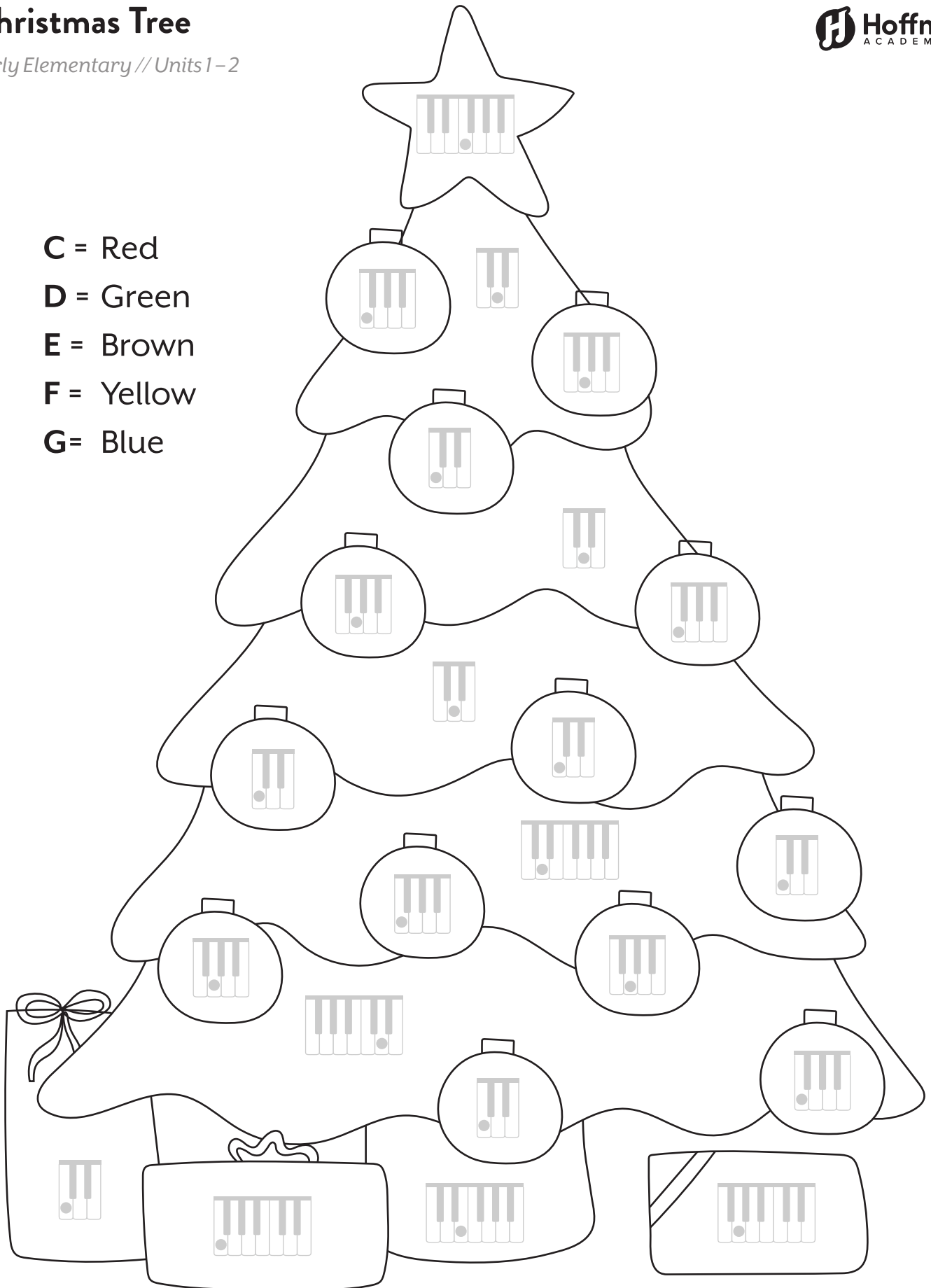


Christmas Tree

Early Elementary // Units 1-2

- C = Red
- D = Green
- E = Brown
- F = Yellow
- G = Blue



Snowman Chords!

Early Elementary // Units 2-4

Connect the chords on the staff to the correct snowman.

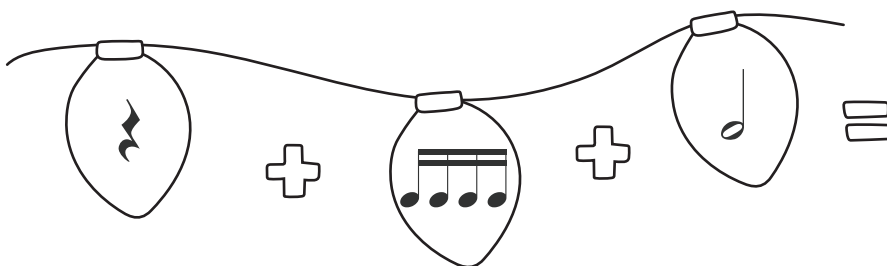
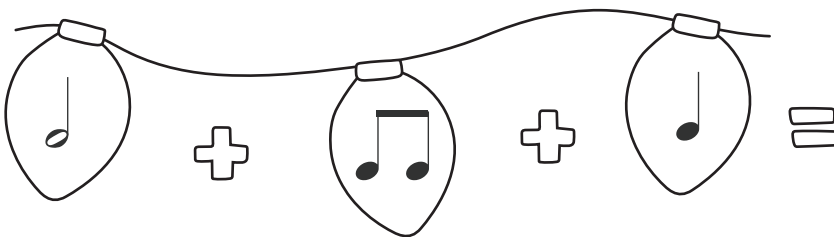
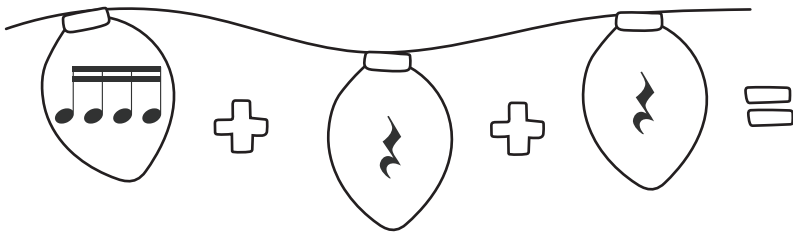
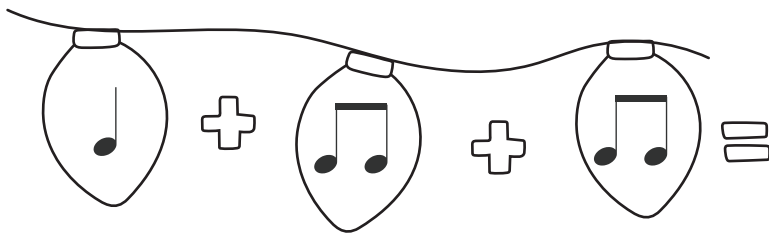
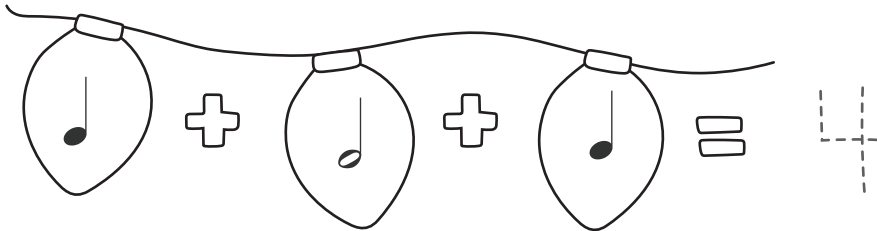
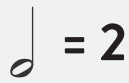
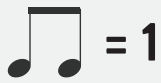
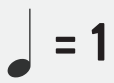


The worksheet contains the following musical staves and chords:

- Top left: Treble clef, G4, A4, B4 (G major triad)
- Top middle: Treble clef, F4, G4, A4 (F major triad)
- Top right: Bass clef, F#4, G4, A4 (F# major triad)
- Middle right: Treble clef, F#4, G4, A4 (F# major triad)
- Middle left: Bass clef, F4, G4, A4 (F major triad)
- Middle right: Bass clef, G4, A4, B4 (G major triad)
- Middle left: Treble clef, G4, A4, B4 (G major triad)
- Middle right: Bass clef, F#4, G4, A4 (F# major triad)
- Bottom left: Bass clef, F#4, G4, A4 (F# major triad)
- Bottom middle: Treble clef, F#4, G4, A4 (F# major triad)
- Bottom right: Treble clef, G4, A4, B4 (G major triad)
- Bottom middle: Bass clef, F#4, G4, A4 (F# major triad)

How Many Beats?

Early Elementary // Units 1-2



Steps and Skips

Early Elementary // Units 1-2

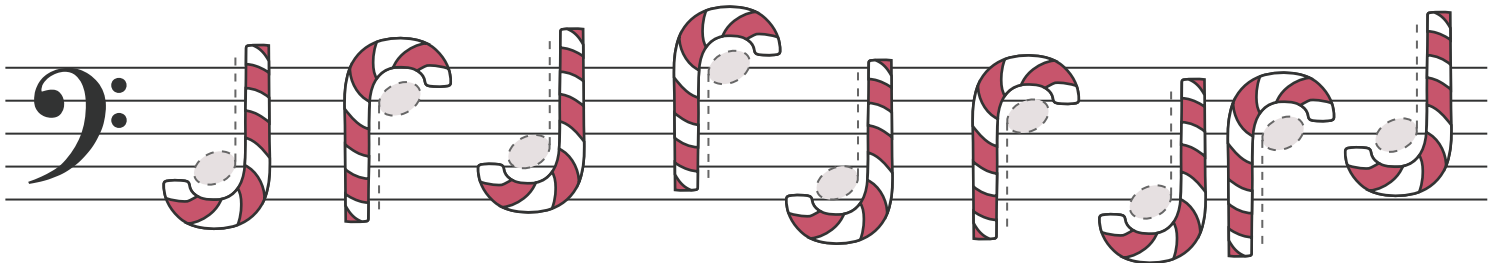
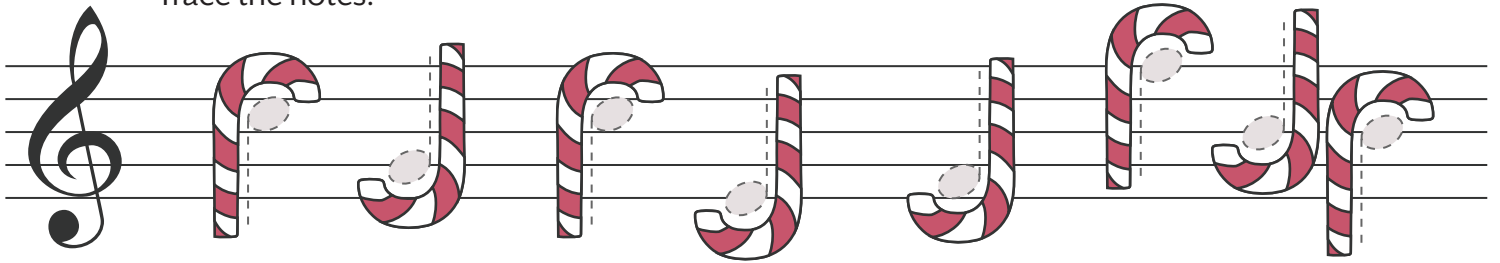


Candy Cane Notes: Up or Down?

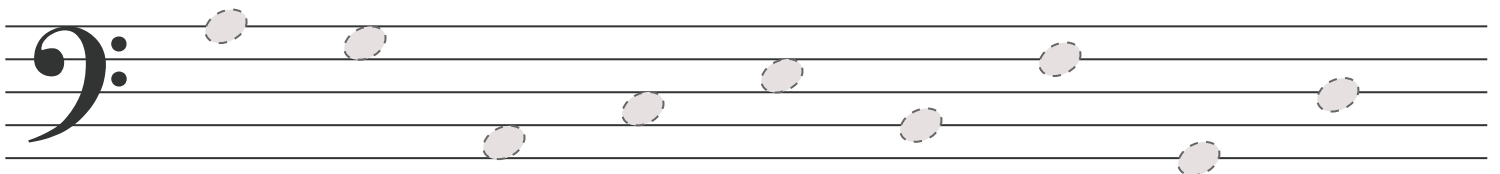
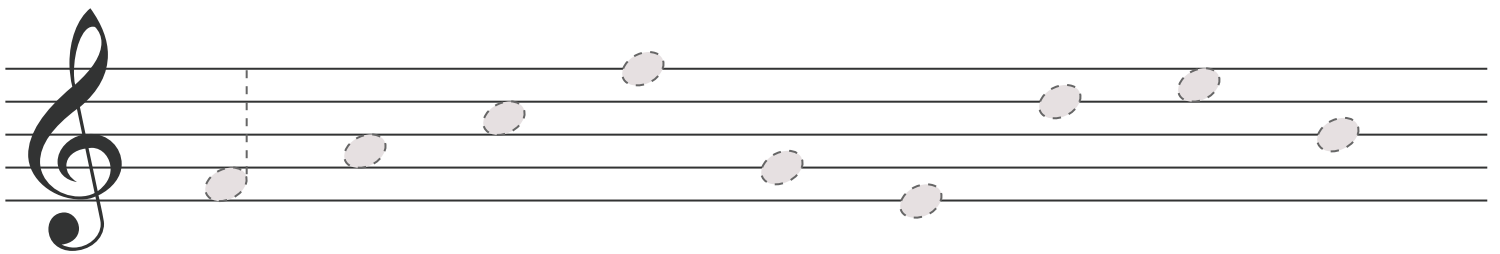
Early Elementary // Units 1-2



Trace the notes:



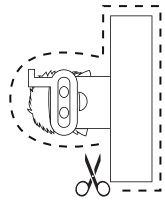
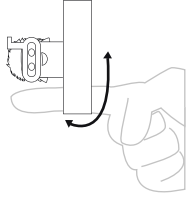
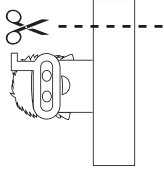

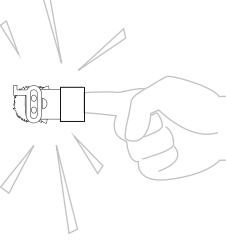
Add stems!



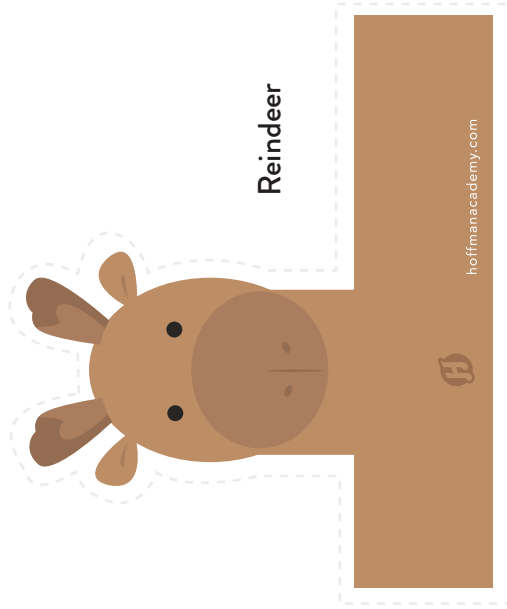
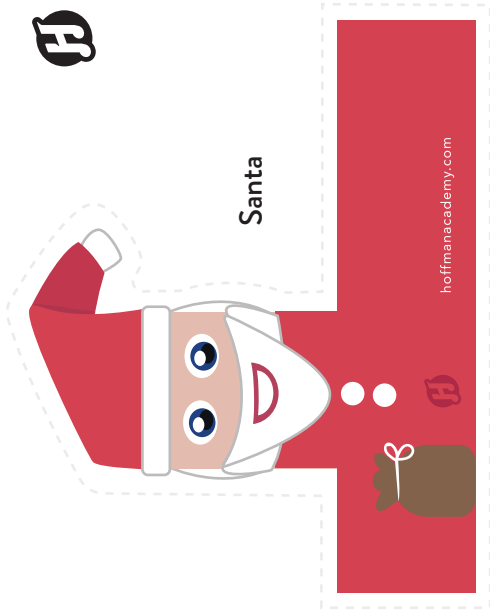
Paper Finger Puppets

CHRISTMAS EDITION



Instructions 		
		
TAPE	PLAY!	

Recommended to print on cardstock paper



How Many Beats?

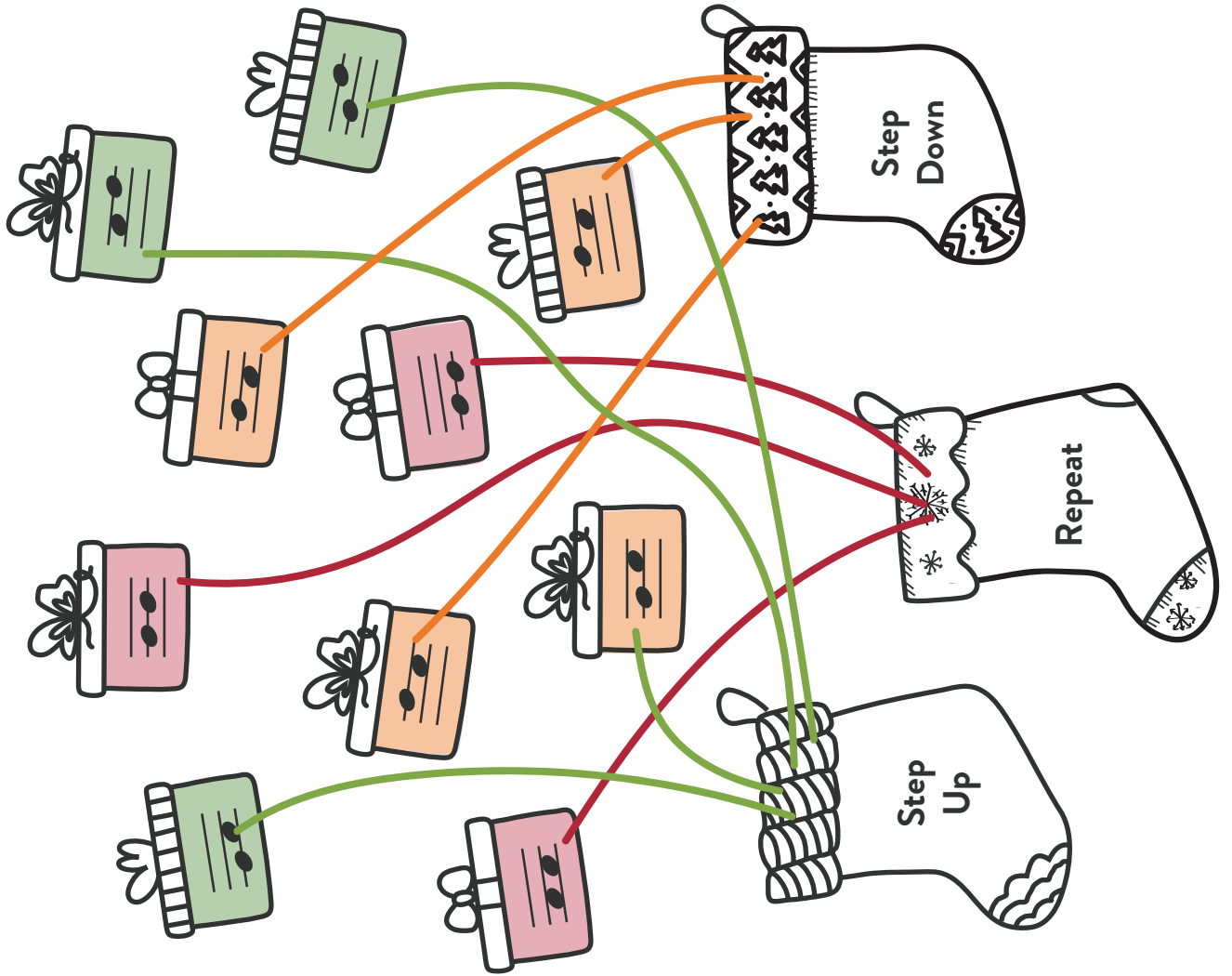
1. A stem with four quarter notes. **4**
 2. A stem with a quarter note, a quarter rest, a quarter note, and a quarter rest. **3**
 3. A stem with a quarter note, a quarter rest, a quarter note, and a quarter rest. **3**
 4. A stem with a quarter note, a quarter note, a quarter note, and a quarter note. **4**
 5. A stem with a quarter note, a quarter note, a quarter note, and a quarter note. **4**

Snowman Chords!

The snowman is divided into three sections: head, torso, and base. Red lines connect specific musical staves to these sections:

- Head:** Connected to a treble clef staff with a G4 note, a bass clef staff with a G3 note, and a bass clef staff with a G2 note.
- Torso:** Labeled with a Roman numeral **I**. Connected to a treble clef staff with a G4 note, a bass clef staff with a G3 note, and a bass clef staff with a G2 note.
- Base:** Labeled with a Roman numeral **V7**. Connected to a treble clef staff with a G4 note, a bass clef staff with a G3 note, and a bass clef staff with a G2 note.

Steps and Skips



Candy Cane Notes: Up or Down?

Add stems!

The image shows two musical staves. The top staff has a treble clef and the bottom staff has a bass clef. Both staves contain a sequence of eight notes: G4, A4, B4, C5, B4, A4, G4, F4. Each note is represented by a grey oval on a red vertical line (stem) without a flag. The word 'or' is written in red next to the final note (F4) on both staves.