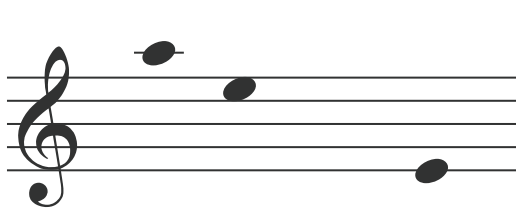
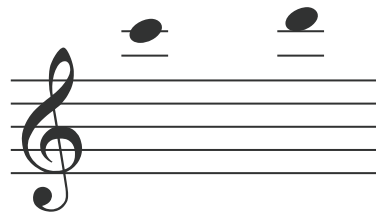


Valentine's Day Mystery Word Speller

Elementary // Units 5-8

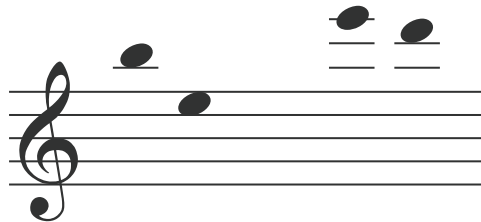
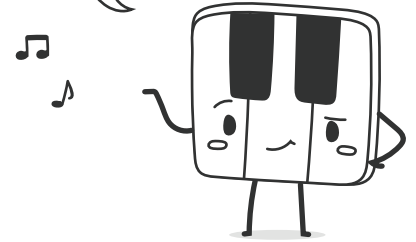


V _ l _ n t i n _ s

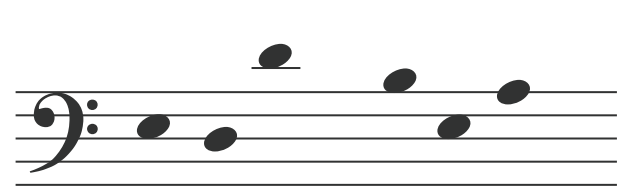


_ u p i _

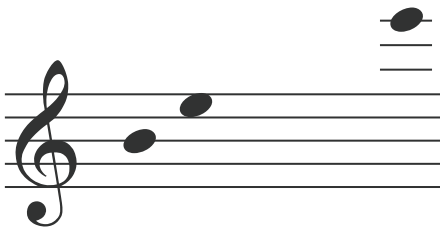
Can you help me decipher these words?



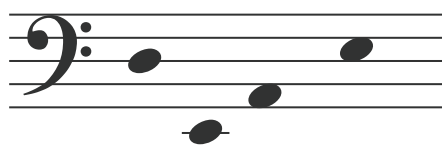
_ _ l o v _ _



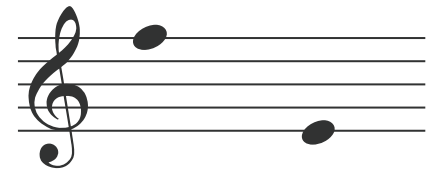
t _ _ _ y _ _ _ r s



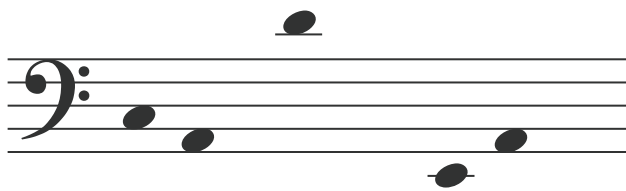
_ _ m i n _



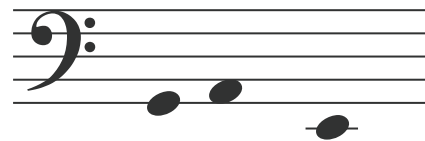
_ _ _ r _ s t



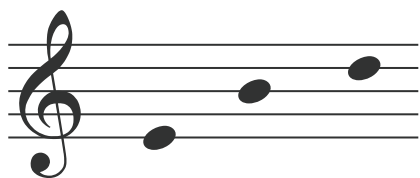
_ l o w _ r s



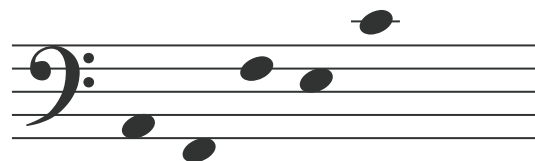
_ _ n _ y h _ _ r t s



_ _ m _ s



l o v _ _ i r _ s



_ _ _ _ _ t i o n

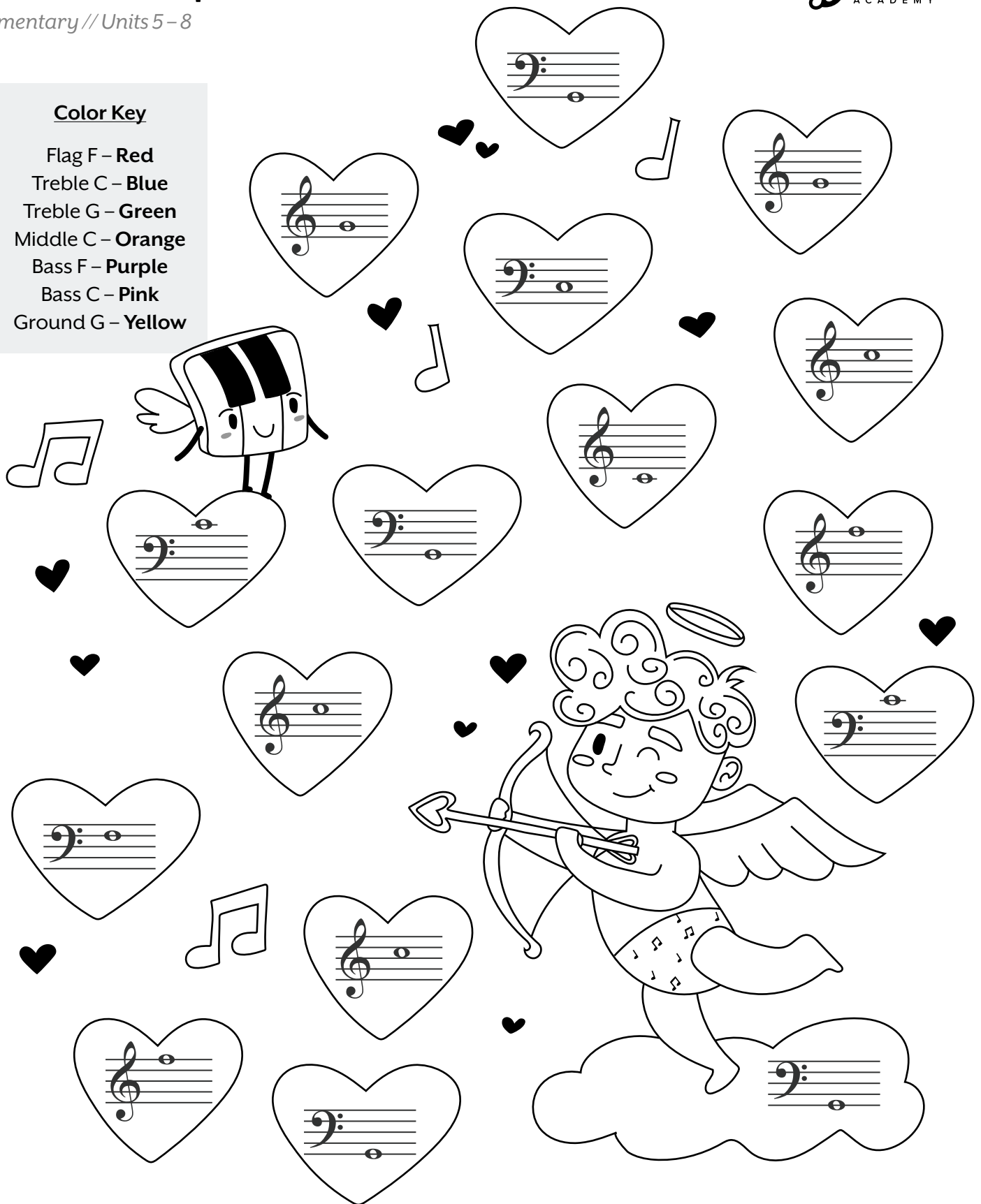


Guide Note Cupid

Elementary // Units 5-8

Color Key

- Flag F - Red
- Treble C - Blue
- Treble G - Green
- Middle C - Orange
- Bass F - Purple
- Bass C - Pink
- Ground G - Yellow



Chord Cakes

Elementary // Units 5-8

- ① Write in the letter names in each circle.
- ② Identify the name of each chord in the blanks below.
- ③ Draw lines to connect each chord to one of the following groups:



Chocolate



Vanilla



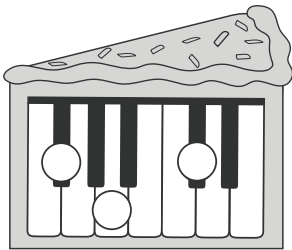
Chocolate with
Vanilla filling

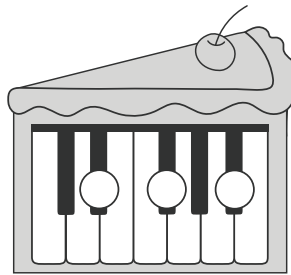


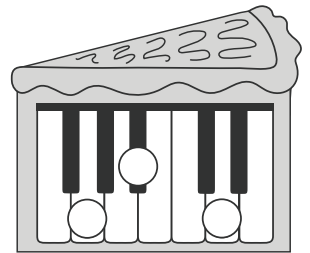
Vanilla with
Chocolate filling

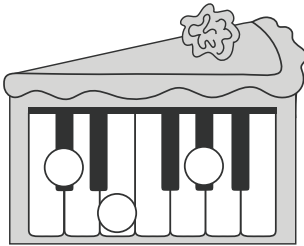


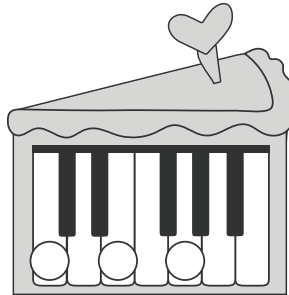
Odd

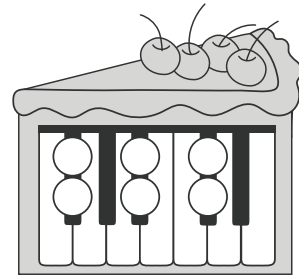


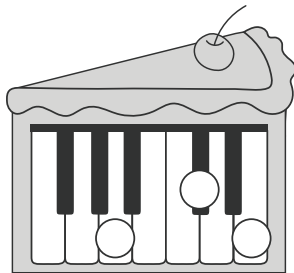


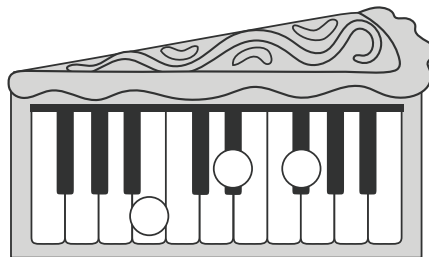


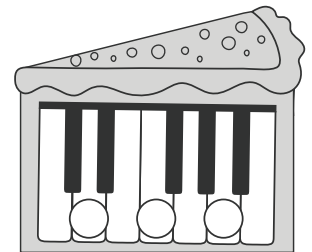






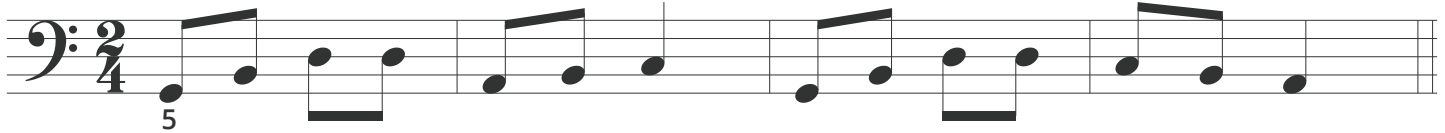






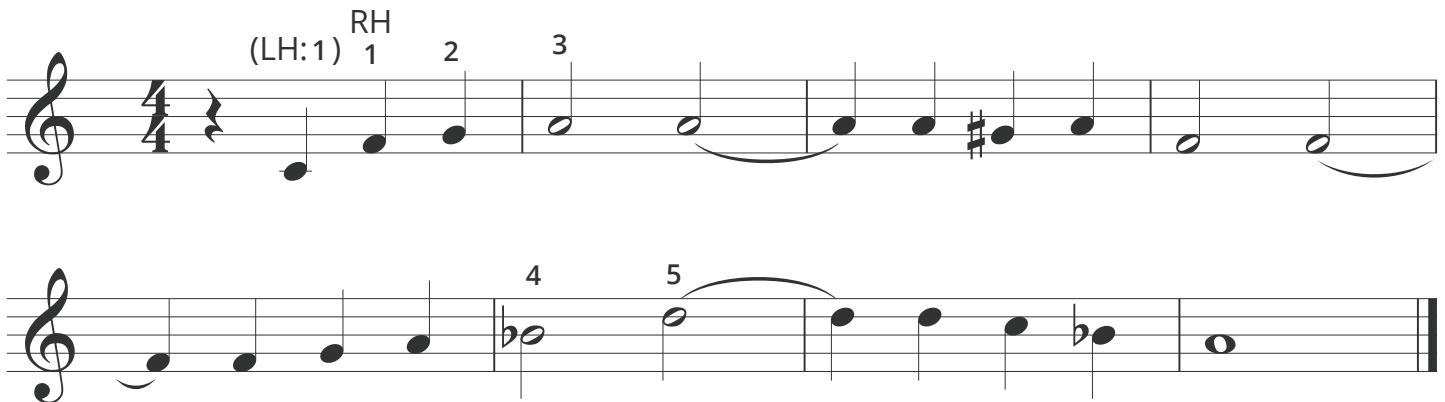
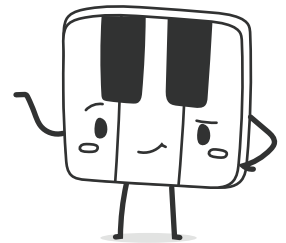
Name That Tune

Elementary // Units 5-8

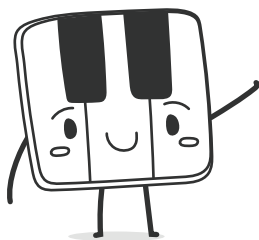


Song Name Here

What is this song?



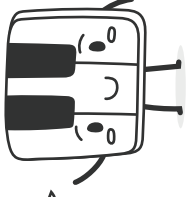
And this one?



Song Name Here

Valentine's Intervals Candy Hearts

Elementary // Units 5 - 8

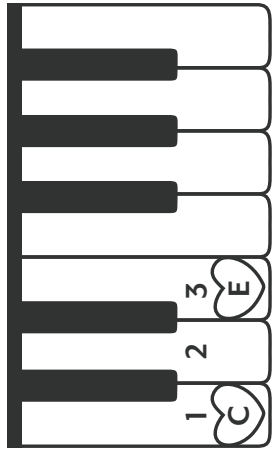


Remember, an interval is the distance between two notes, including the first and last notes.

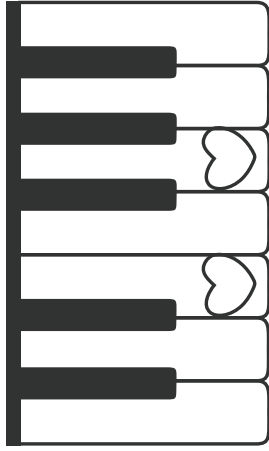
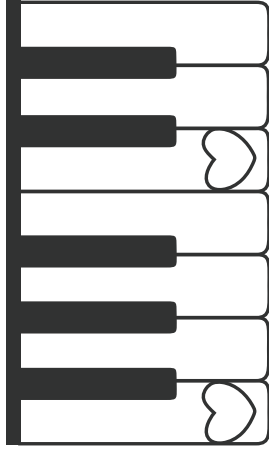
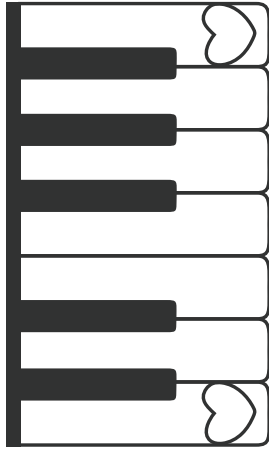
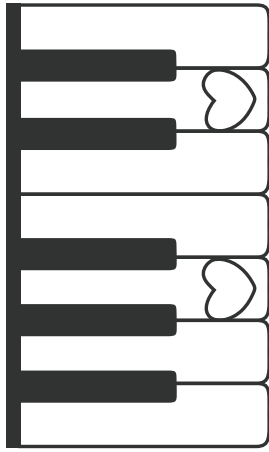
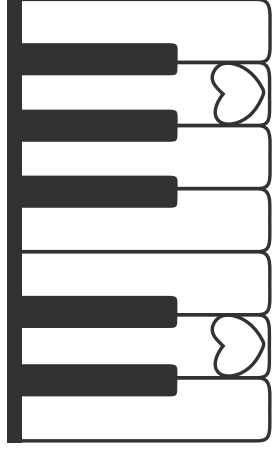
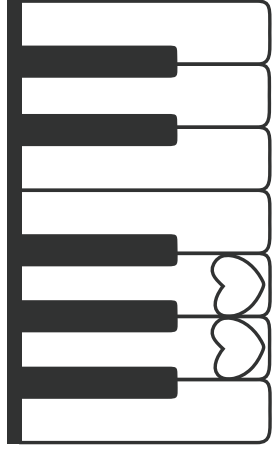
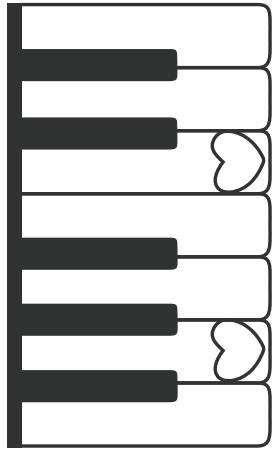
- ① Name the notes.
- ② Color the hearts.

2nds	Pink	4th	Blue	6th	Yellow
3rd	Purple	5th	Green	7th	Orange

Example:

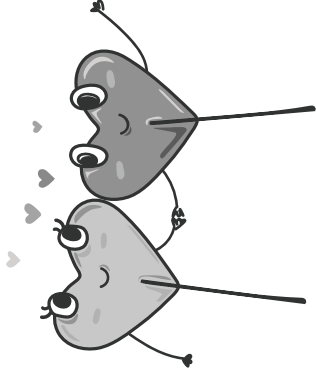


3rd



Valentine's Intervals Candy Hearts

Elementary // Units 5 – 8



- 1 Name the notes.
- 2 Color the clouds.

2nds	Pink	4th	Blue	6th	Yellow
3rd	Purple	5th	Green	7th	Orange

Example:
 E
 C - 3rd

Don't skip a beat on Valentine's Day!

Elementary // Units 5–8

- ① Compose your own Valentine's Day haiku.

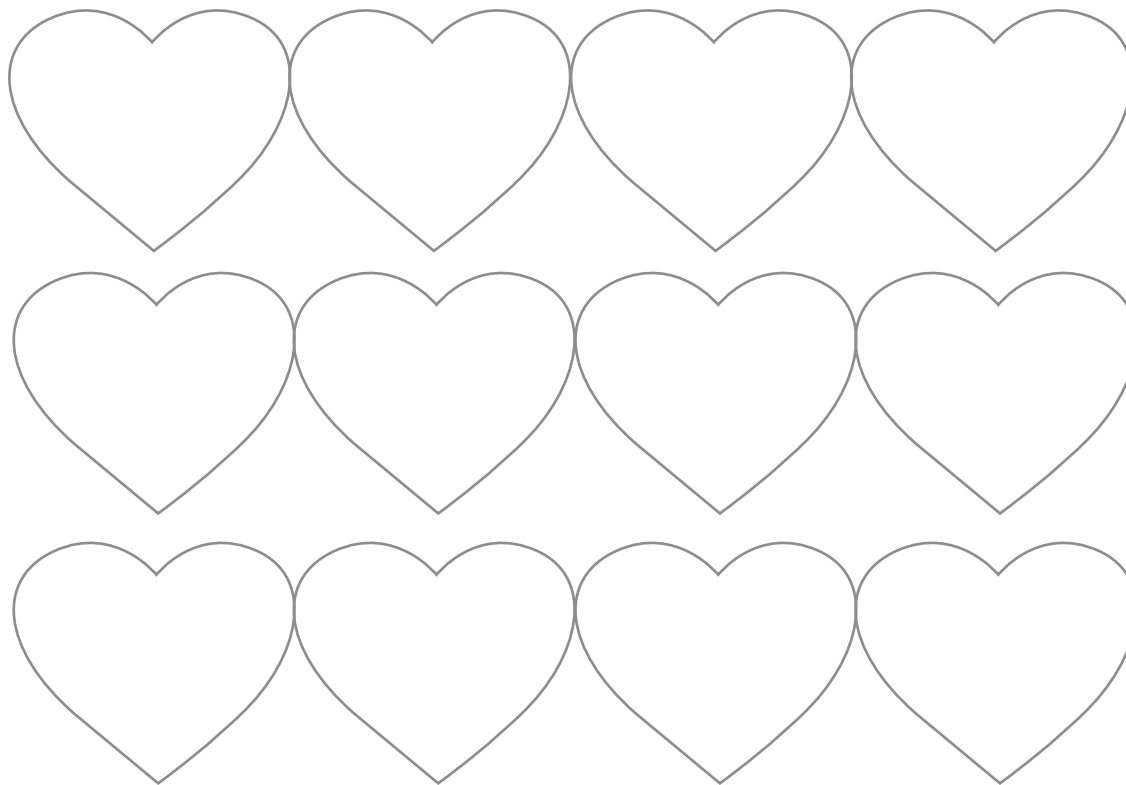
_____ (5 syllables)

_____ (7 syllables)


_____ (5 syllables)

- ② Choose a rhythm for your haiku. Write it in the heartbeats below.

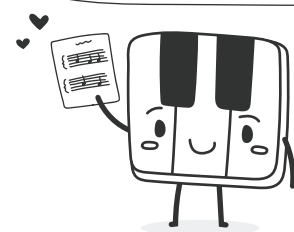
Hint: Try saying the words out loud to find their natural rhythm.



- ③ Choose a pentascale, then compose a melody for your haiku. Write the letter names for each note next to the note heads you drew in the previous step.

-  ① Play your composition and listen carefully.
Do you like it? Anything you want to change?
- ② Notate your composition using the blank staves on the following page.
- ③ Optional: Add chords.
- ④ Share your composition by playing it for someone else!

Can you write a family member or friend a Valentine's haiku? Use your poem to write a song! Use the next page to write the notes.

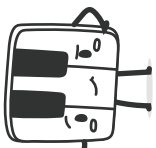


Answer Key

Elementary // Units 5 – 8

Valentine's Day Mystery Word Speller

Can you help me decipher these words?





va**l**e**n**t**i**n**e**s **c**u**p****i**d

be**l**o**v****e**d **t****e****d**d**y** **b****e****a**r**s**

be **m**i**n****e** **d****e****a**r**e****s****t** **f****l****o****w**e**r****s**

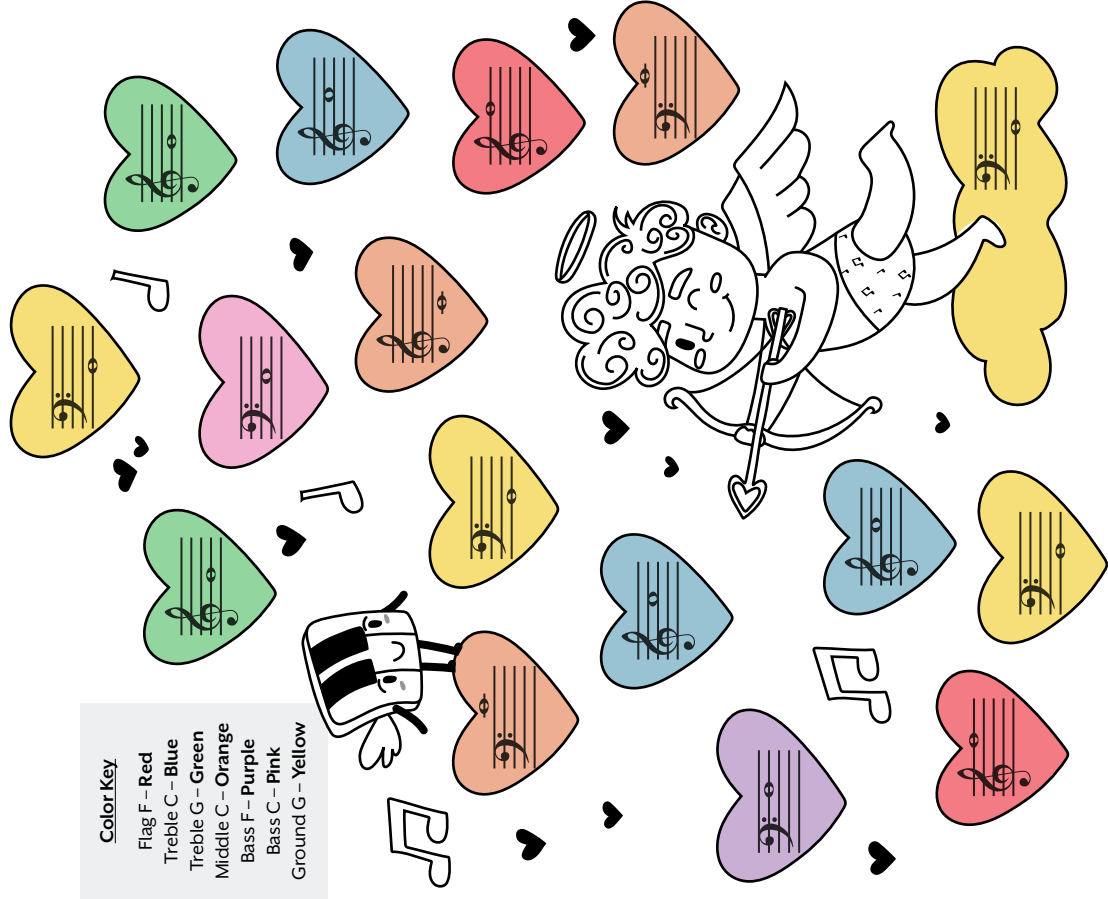
c**a****n**d**y** **h****e****a**r**t****s** **g****a**m**e****s**

l**o****v**e **b****i****r**d**s** **a****f****f**e**c****t****i****o****n**

Guide Note Cupid

Color Key	
Flag	F – Red
Treble C	– Blue
Treble G	– Green
Middle C	– Orange
Bass F	– Purple
Bass C	– Pink
Ground G	– Yellow



Chord Cakes

Chocolate: ● ● ● ●

Vanilla: ○ ○ ○ ○

Chocolate with Vanilla filling: ● ● ○ ○

Vanilla with Chocolate filling: ○ ○ ● ●

Odd: ● ○ ○ ○

F# minor (Chords: F#, C#, G)

A major (Chords: A, C#, E)

C# minor (Chords: C#, E, G)

C major (Chords: C, E, G)

Eb minor (Chords: Eb, Gb, Bb)

G minor (Chords: G, Bb, D)

F# major (Chords: F#, A#, C#)

Gb major (Chords: Gb, Bb, Db)

D minor (Chords: D, F, A)

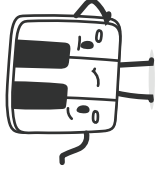
B major (Chords: B, D#, F#)

Name That Tune

Love Somebody

Song Name Here

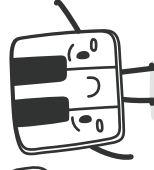
What is this song?



You Are My Sunshine

Song Name Here

And this one?



Valentine's Intervals Candy Hearts

① Name the notes. ② Color the hearts.

2nds	Pink	4th	Blue	6th	Yellow
3rd	Purple	5th	Green	7th	Orange

Example:

3rd 4th 2nd 5th

4th 7th 5th 3rd

Valentine's Intervals Candy Hearts

① Name the notes. ② Color the clouds.

2nds	Pink	4th	Blue	6th	Yellow
3rd	Purple	5th	Green	7th	Orange

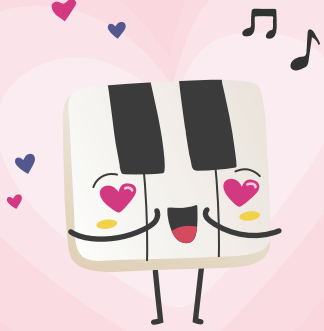
Example:

3rd 4th 6th 5th 4th 5th

2nd 5th 4th 2nd

3rd

You make my heart sing



To:

From:



Love some-bo - dy, yes I do,



Love some-bo-dy but I won't say who

To:

From:

I Think You're Grand



To:

From:

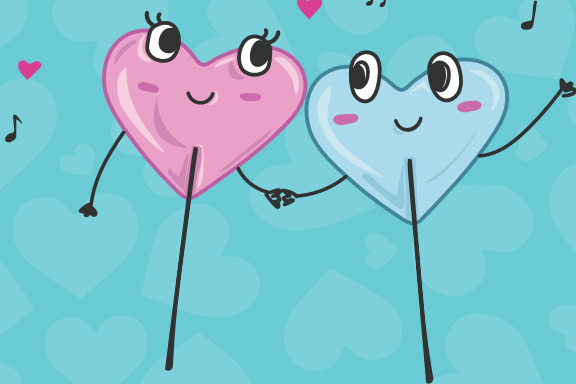
Looking pretty *sharp,* valentine.



To:

From:

Happy Valetines Day



To:

From:

Will you be my Valentine?



To:

From:

If I told you that I
loved you, would
you love me
Bach?

To:

From:



You are the key to
(Signature)



To:

From:

Just a Note to say...

Happy
Valentine's
Day!

To:

From:



We are always in **tune**



Happy
Valentine's
Day!

To:

From:

Without you,
life would
B flat

To:

From:



You make me
whole

To:

From:

