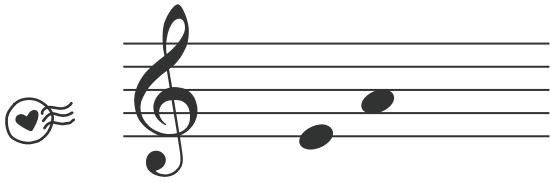
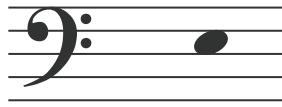


# Valentine's Day Mystery Word Speller

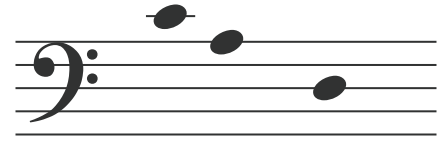
Early Elementary // Units 3-4



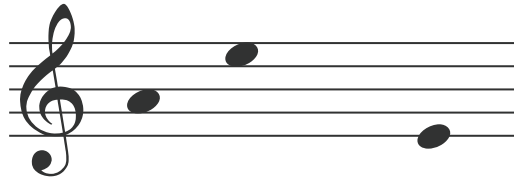
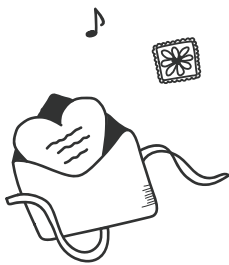
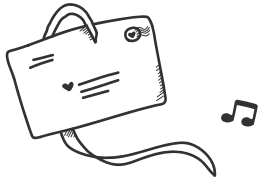
h \_ \_ r t s



l o v \_

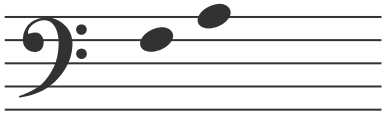
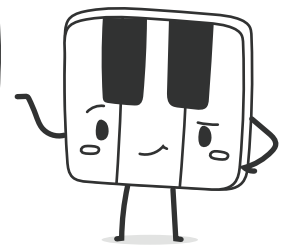


\_ \_ n \_ y

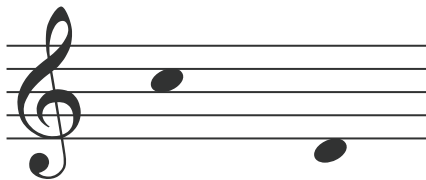


V \_ l \_ n t i n \_ s

Can you help  
me decipher  
these words?



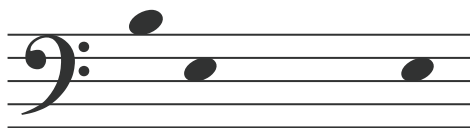
\_ \_ m i l y



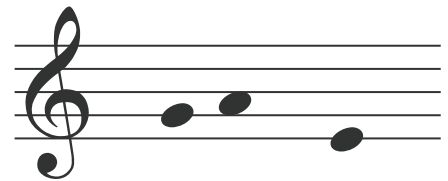
\_ u p i \_



\_ r i \_ n \_ s



\_ \_ m i n \_



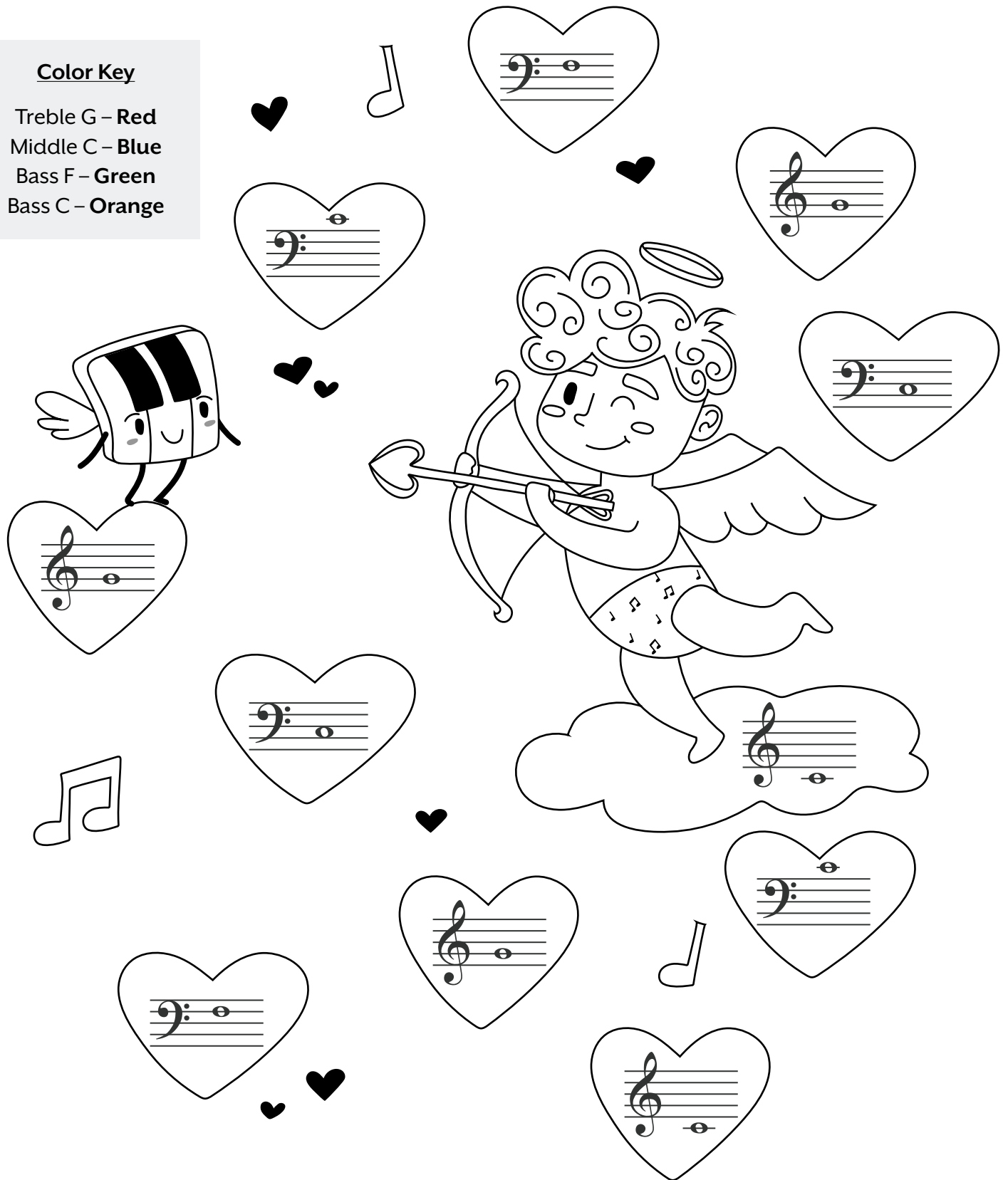
\_ \_ m \_ s

# Guide Note Cupid

Early Elementary // Units 3-4

## Color Key

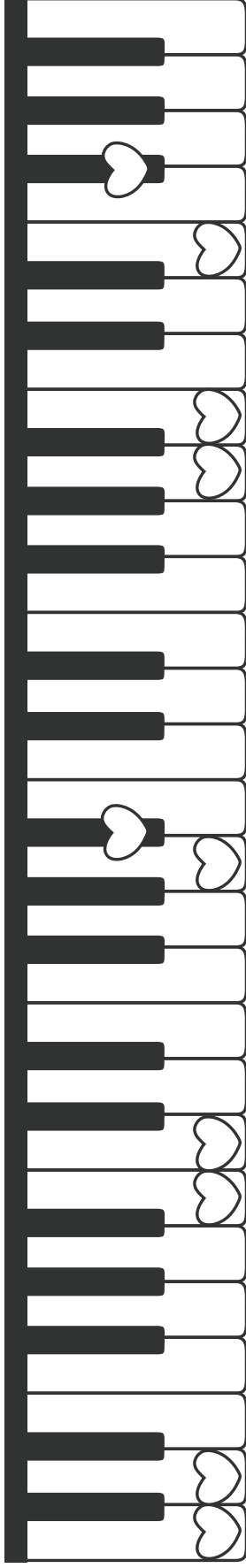
Treble G – Red  
Middle C – Blue  
Bass F – Green  
Bass C – Orange



# Valentine's Candy Hearts

Half Steps and Whole Steps on the Keyboard

Early Elementary // Units 3 - 4



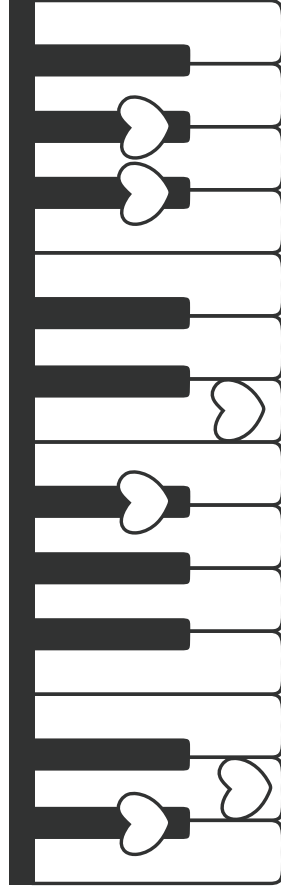
Circle one:

Half Step  
or  
Whole Step

Half Step  
or  
Whole Step

Half Step  
or  
Whole Step

Half Step  
or  
Whole Step



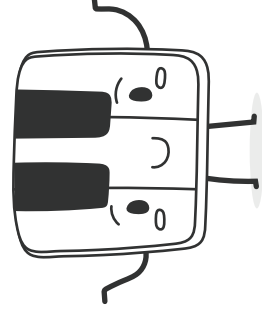
Circle one:

Half Step  
or  
Whole Step

Half Step  
or  
Whole Step

Half Step  
or  
Whole Step

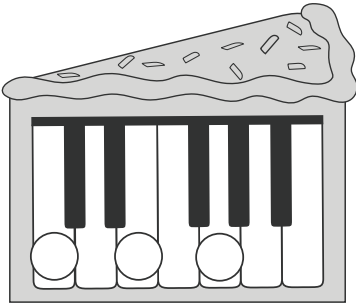
Can you help me decide which is a whole or half step?



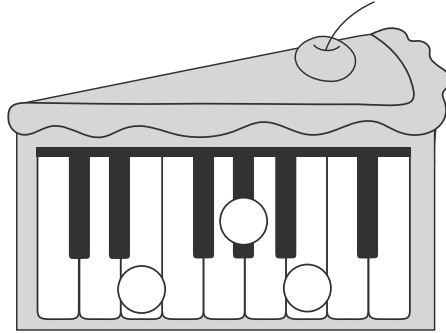
# Chord Cakes

Early Elementary // Units 3-4

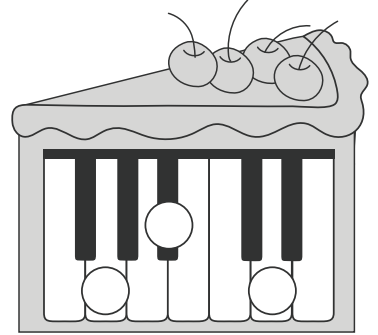
- ① Write in the letter names in each circle.
- ② Identify the name of each chord in the blanks below.



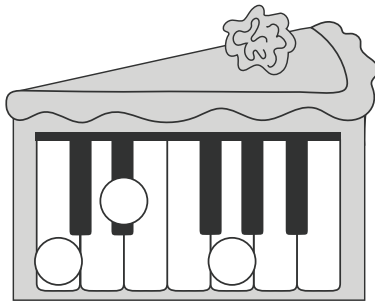
\_\_\_\_\_



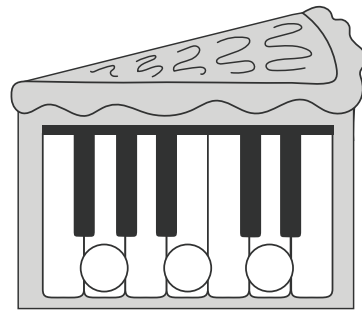
\_\_\_\_\_



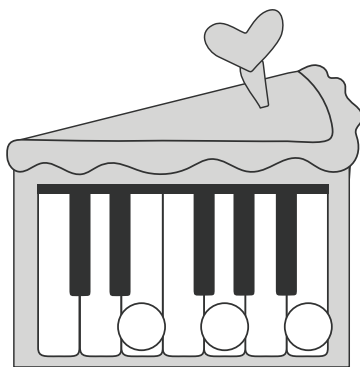
\_\_\_\_\_



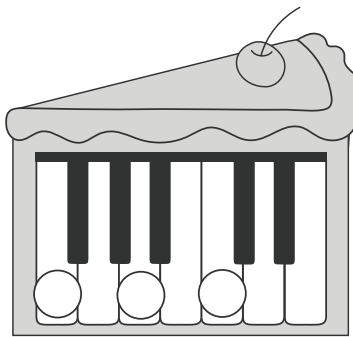
\_\_\_\_\_



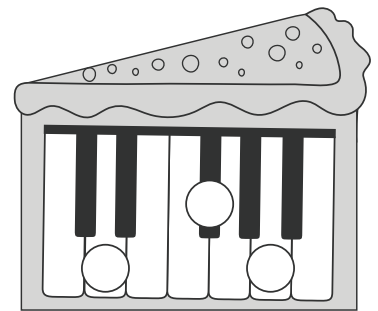
\_\_\_\_\_



\_\_\_\_\_



\_\_\_\_\_



\_\_\_\_\_

# Don't skip a beat on Valentine's Day!

Early Elementary // Units 3-4

- ① Write your own rhythms in the heartbeats below.
- ② Speak your rhythm while touching each heartbeat.

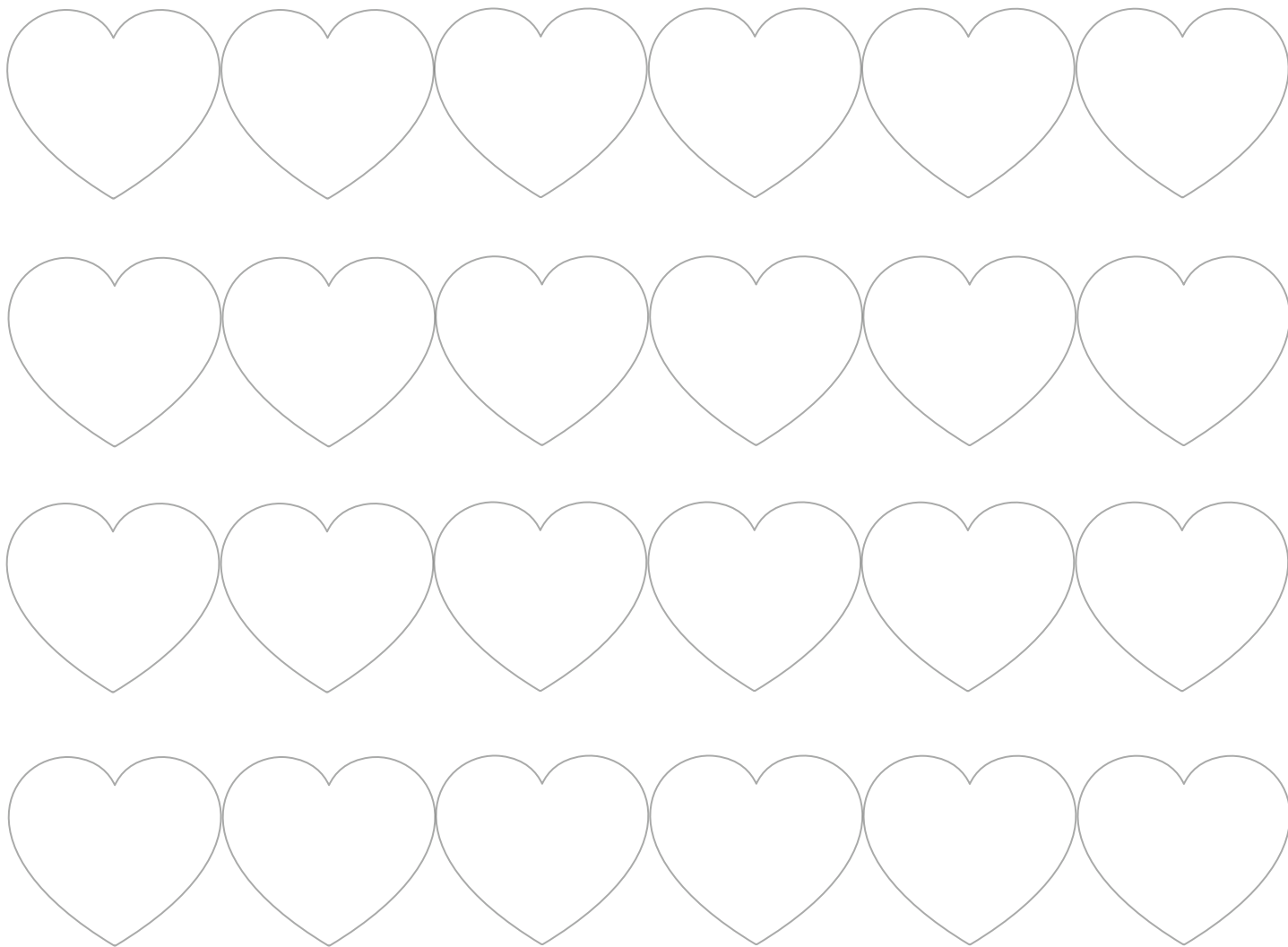
Rhythms to use:



Remember to give a half note two beats:



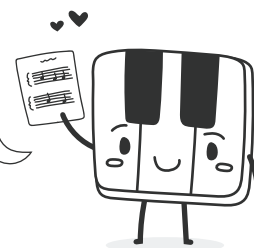
Give a dotted half note three beats:



## Super Challenge

Play your rhythm on the piano. Use any keys – you choose!

Can you write a family member or friend a Valentine's song? Write it in AABA form, like "Hot Cross Buns".



# Answer Key

Early Elementary // Units 3-4

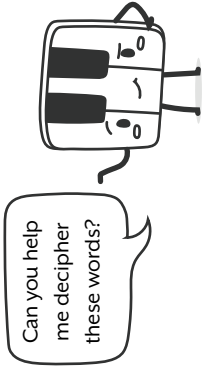
## Valentine's Day Mystery Word Speller

h **e** **a** r t s

h **e** **a** r t s      l o v **e**      **c** **a** n **d** y



v **a** l e n t i n e s



f **a** m i l y

f **a** m i l y      **c** u p i d      f r i e n d s

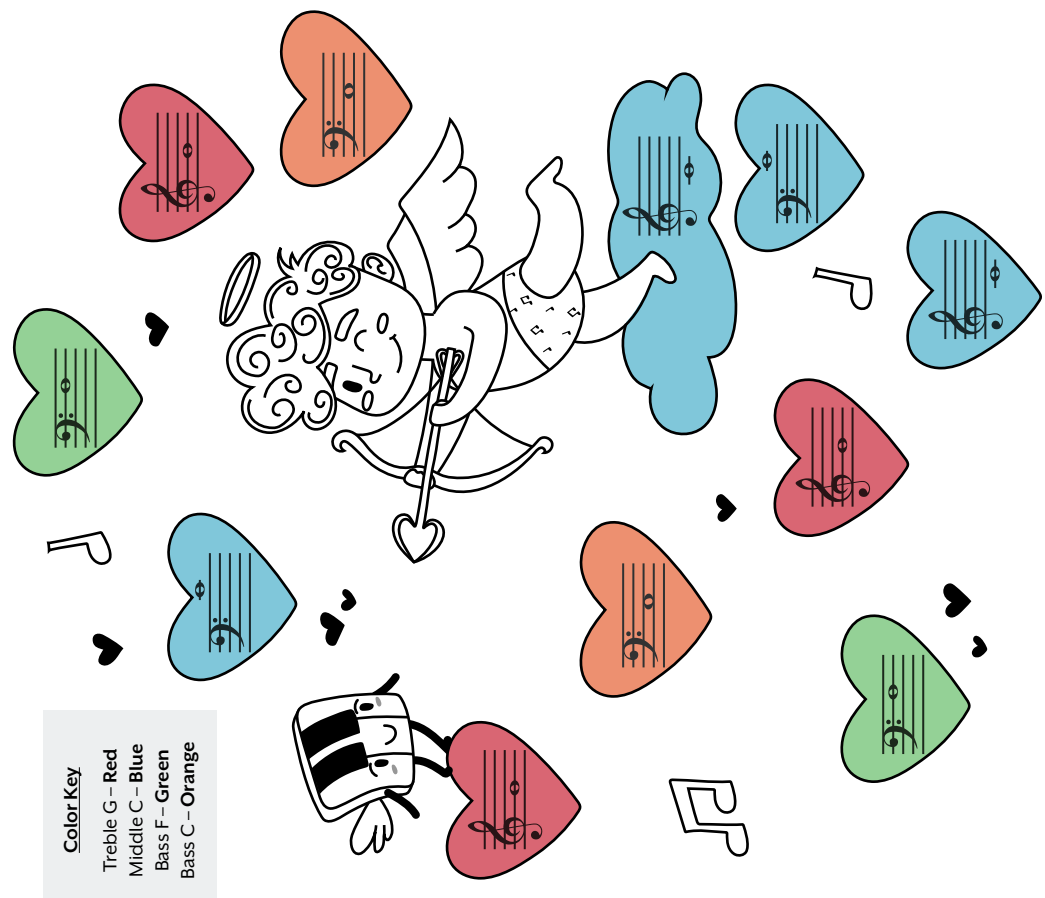


b **e** m i n e

b **e** m i n e      g **a** m e s

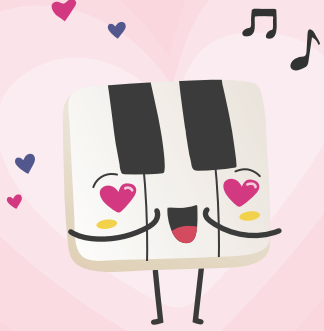
## Guide Note Cupid

**Color Key**  
 Treble G - Red  
 Middle C - Blue  
 Bass F - Green  
 Bass C - Orange





# You make my heart sing



To:

From:



Love some-bo - dy, yes I do,



Love some-bo-dy but I won't say who

To:

From:

# I Think You're Grand



To:

From:

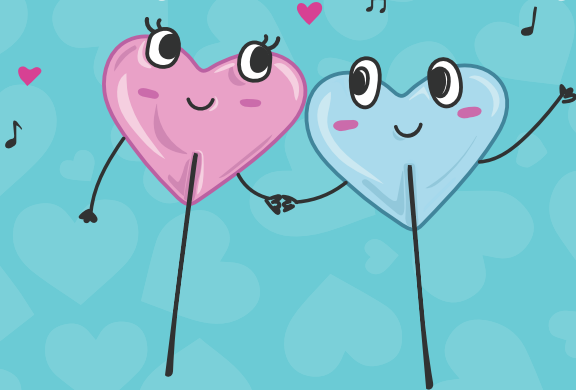


# Looking pretty *sharp,* valentine.

To:

From:

# Happy Valetines Day



To:

From:

# Will you be my Valentine?



To:

From:



*If I told you that I  
loved you, would  
you love me  
**Bach?***

To:

From:



*You are the key to  
(Signature)*



To:

From:

*Just a Note to say...*

*Happy  
Valentine's  
Day!*

To:

From:



*We are always in **tune***



*Happy  
Valentine's  
Day!*

To:

From:

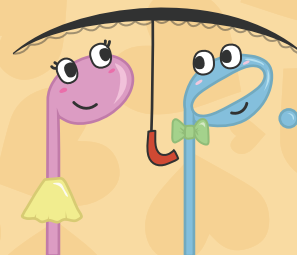
*Without you,  
life would  
**B flat***

To:

From:



*You make me  
**whole***



To:

From: