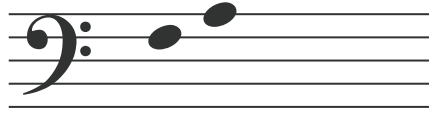


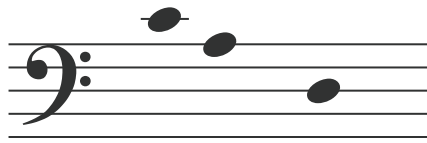
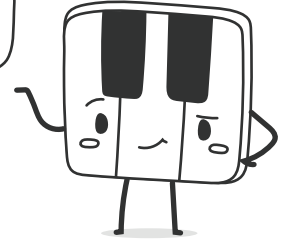
# Valentine's Day Mystery Word Speller

Early Elementary // Units 1-2

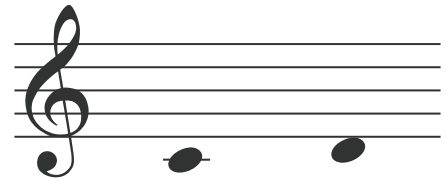


\_ \_ m i l y

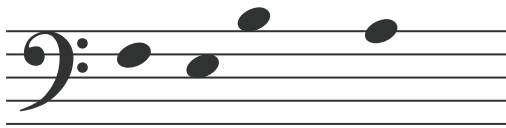
Can you help me decipher these words?



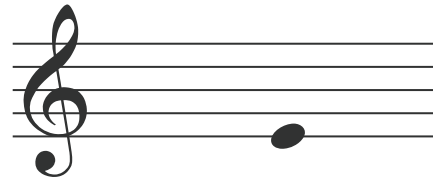
\_ \_ n \_ y



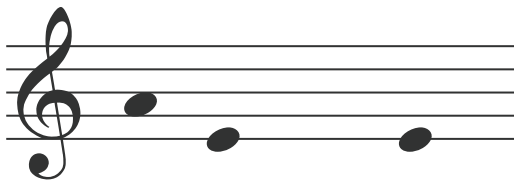
\_ u p i \_



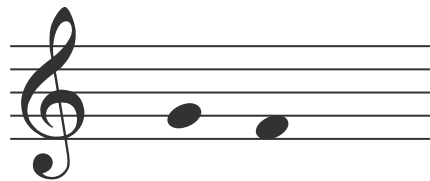
\_ \_ \_ r u \_ r y



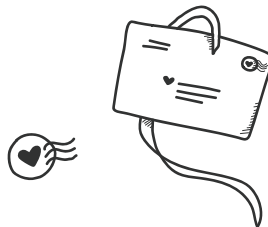
l o v \_



V \_ l \_ n t i n \_ s



\_ i \_ t s

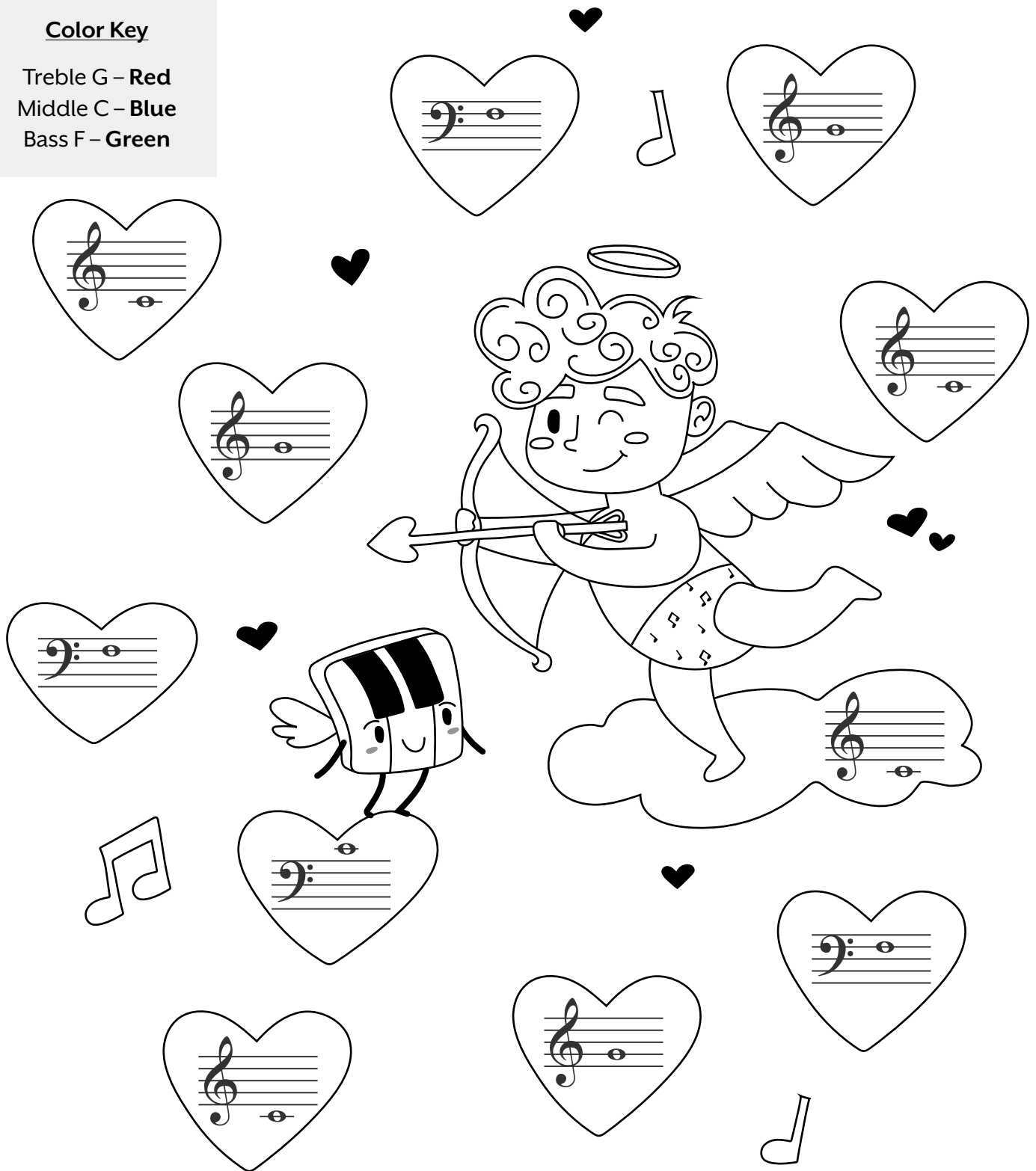


# Guide Note Cupid

Early Elementary // Units 1-2

## Color Key

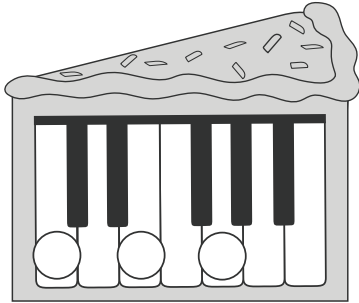
Treble G – Red  
Middle C – Blue  
Bass F – Green



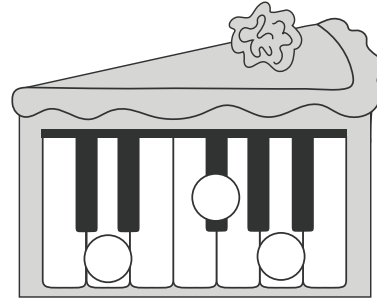
# Chord Cakes

Early Elementary // Units 1-2

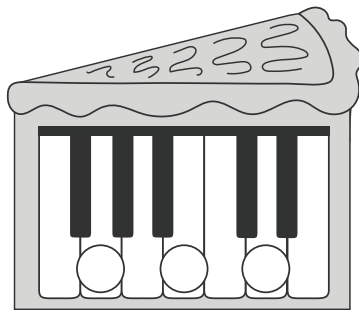
- ① Write in the letter names in each circle.
- ② Identify the name of each chord in the blanks below.



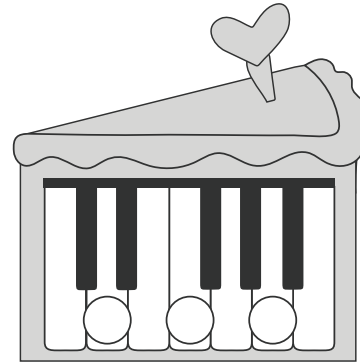
\_\_\_\_\_



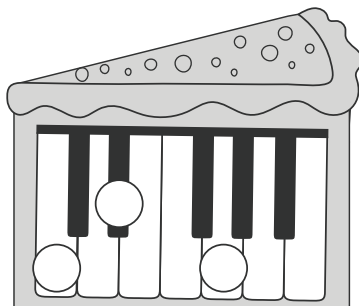
\_\_\_\_\_



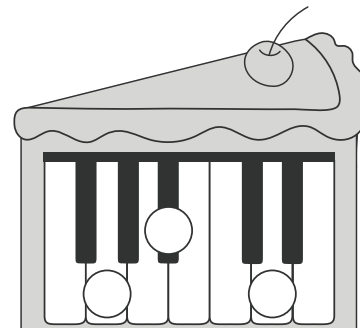
\_\_\_\_\_



\_\_\_\_\_



\_\_\_\_\_

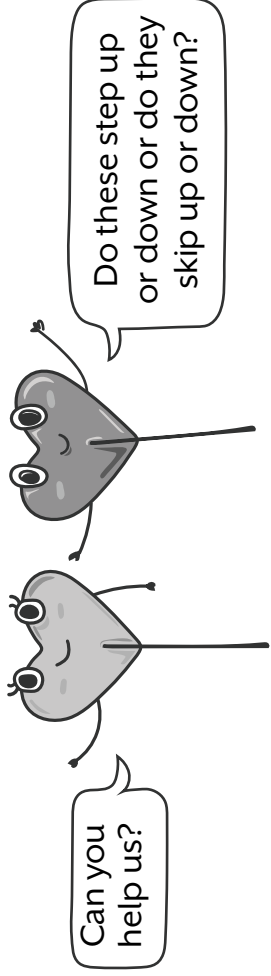


\_\_\_\_\_

# Valentine's Candy Hearts

Steps and Skips on the Staff

Early Elementary // Units 1 - 2



Musical staff with a treble clef and a whole note on the middle line. Below the staff are three clouds, each containing two hearts. The first cloud has a heart on the first space and a heart on the second line. The second cloud has a heart on the second space and a heart on the third line. The third cloud has a heart on the third space and a heart on the fourth line.

Circle one:

Step Up  
or  
Step Down

Step Up  
or  
Skip Down

Step Up  
or  
Step Down

Musical staff with a bass clef and a whole note on the middle line. Below the staff are three clouds, each containing two hearts. The first cloud has a heart on the second space and a heart on the third line. The second cloud has a heart on the third space and a heart on the fourth line. The third cloud has a heart on the fourth space and a heart on the fifth line.

Circle one:

Step Up  
or  
Step Down

Skip Up  
or  
Step Down

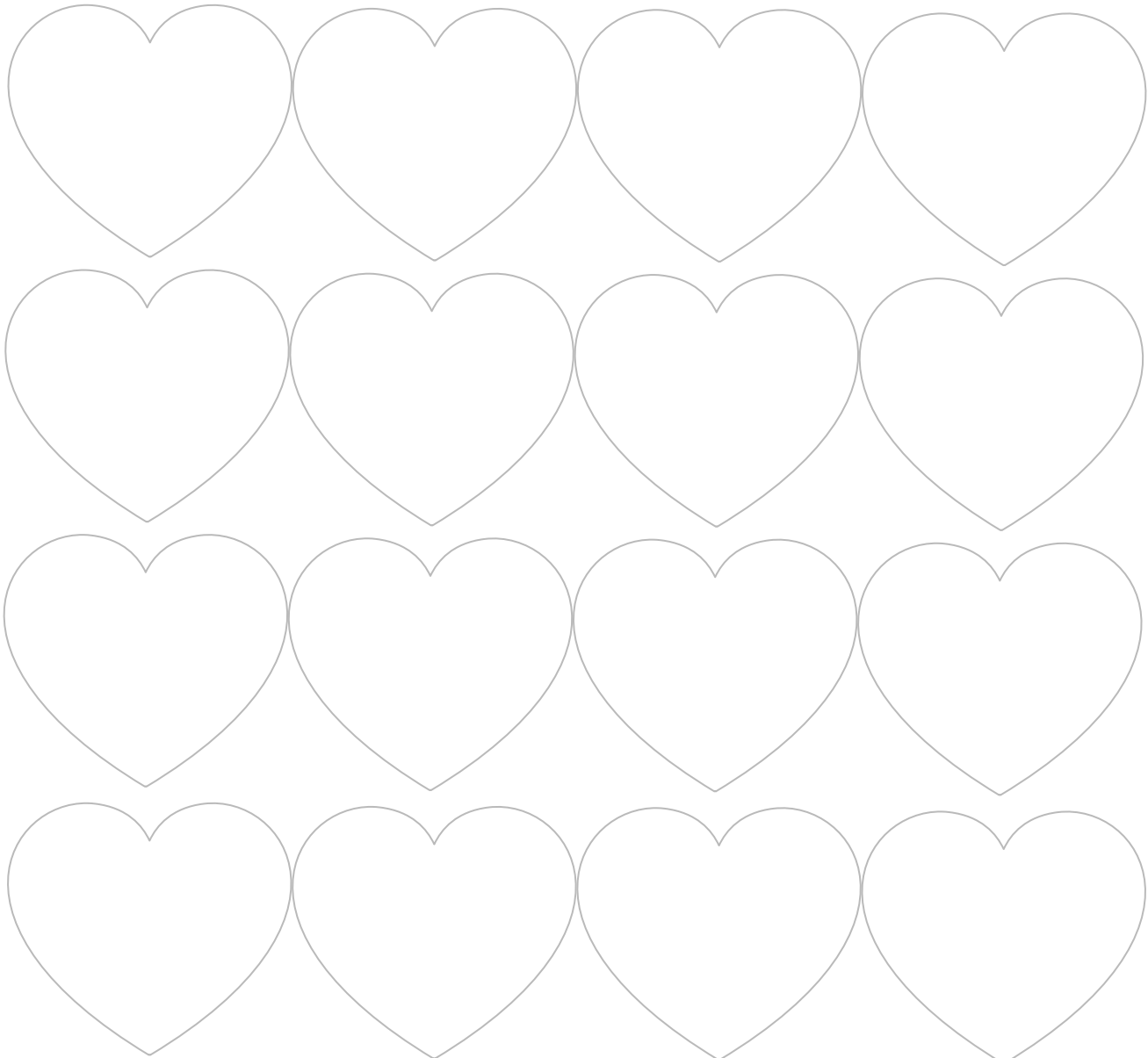
Step Up  
or  
Skip Down

# Don't skip a beat on Valentine's Day!

Early Elementary // Units 1-2

- ① Write your own rhythms in the heartbeats below.
- ② Speak your rhythm while tapping each heartbeat. Touch each heartbeat only once, regardless of the rhythm inside.

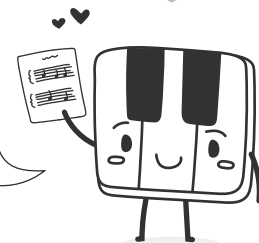
<b>QUARTER NOTE</b>  "ta"	<b>2 EIGHTH NOTES</b>  "ti - ti"	<b>QUARTER REST</b>  "rest" (whispered)
--	---	---



## Super Challenge

Play your rhythm on the piano. Use any keys – you choose!

Can you write a family member friend a Valentine's song? Write it in AABA form, like "Hot Cross Buns".



# Answer Key

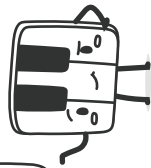
Early Elementary // Units 1 - 2

## Valentine's Day Mystery Word Speller



**f** a mily

Can you help me decipher these words?



**c** a ndy

c up id

**F** e br ua ry

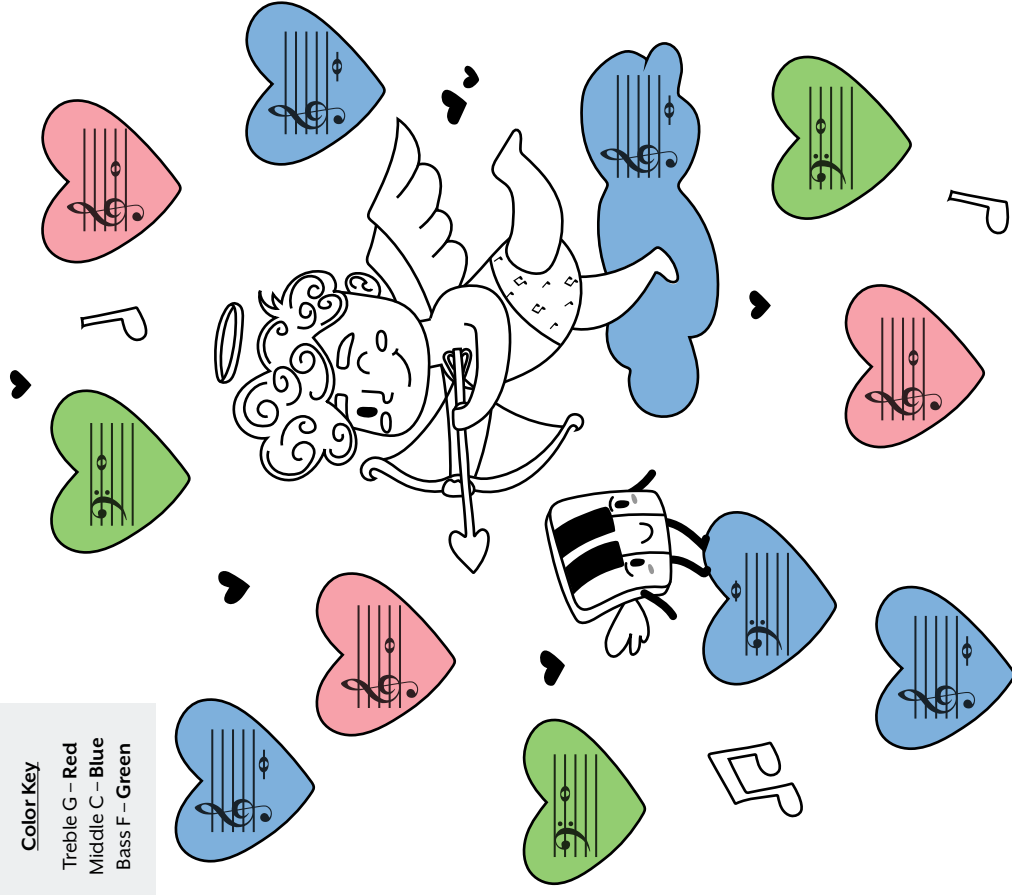
lo ve

v a le nt in es

g i f ts

## Guide Note Cupid

**Color Key**  
 Treble G - Red  
 Middle C - Blue  
 Bass F - Green



# Valentine's Candy Hearts

**Treble Clef:**

- Cloud 1 (2nd line): Step Up or Step Down
- Cloud 2 (3rd line): Step Up or Skip Down
- Cloud 3 (4th line): Step Up or Skip Down

**Bass Clef:**

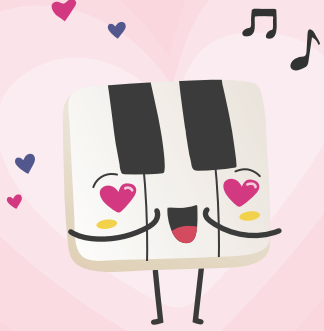
- Cloud 1 (2nd space): Step Up or Step Down
- Cloud 2 (3rd space): Skip Up or Step Down
- Cloud 3 (4th space): Step Up or Skip Down

**Circle one:**

## Chord Cakes

- C major:** C, E, G
- D major:** D, F#, A
- D minor:** D, F, A
- G major:** G, B, D
- G minor:** G, Bb, D
- C minor:** C, Eb, G

# You make my heart sing



To:

From:



Love some-bo - dy, yes I do,



Love some-bo-dy but I won't say who

To:

From:

# I Think You're Grand



To:

From:

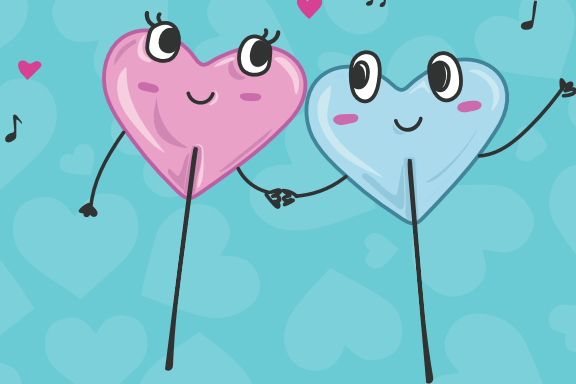


# Looking pretty *sharp,* valentine.

To:

From:

# Happy Valetines Day



To:

From:

# Will you be my Valentine?



To:

From:



*If I told you that I  
loved you, would  
you love me  
**Bach?***

To:

From:



*You are the key to  
(Signature)*



To:

From:

*Just a Note to say...*

*Happy  
Valentine's  
Day!*

To:

From:



*We are always in **tune***



*Happy  
Valentine's  
Day!*

To:

From:

*Without you,  
life would  
**B flat***

To:

From:



*You make me  
**whole***

To:

From:

