

# The Grand Staff Flashcards

For learning Bass Clef and Treble Notes

## Instructions:

 Cut out the Grand Staff Flashcards on the following pages.

## Activities:

### Guide Notes Hunt

- Shuffle the deck.
- Hold the deck of cards in your hand and go through them one at a time, hunting for all Guide Notes. If you see a card that is not a Guide Note, simply place it at the back of the deck and go on to the next card.
- When you find a Guide Note, place it on the music stand of your piano, play it, and name it.
- When you find all 10 Guide Notes, you win!

### Beat Your “Personal Best”

- Shuffle the deck.
- Start timing yourself using a stopwatch.
- For each card in the deck, play the correct note on your piano and name it out loud.
- Stop the timer when you finish all the cards.
- Write down your time in the chart.
- The next time you play, see if you can beat your “Personal Best” time. Whenever you set a new record, write it down on the chart as your new “Personal Best.”

| Date | Personal Best |
|------|---------------|
|      |               |
|      |               |
|      |               |
|      |               |
|      |               |
|      |               |
|      |               |

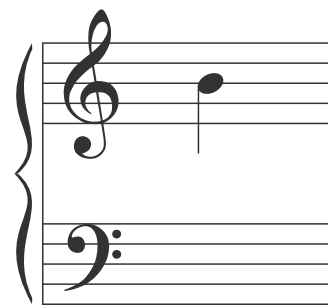
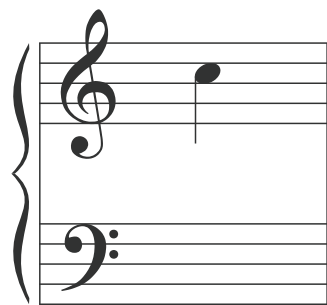
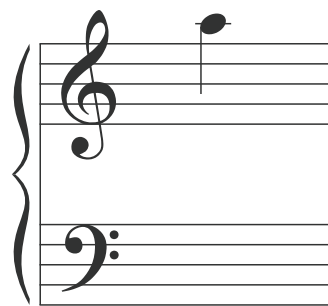
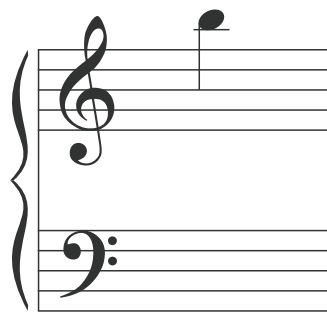
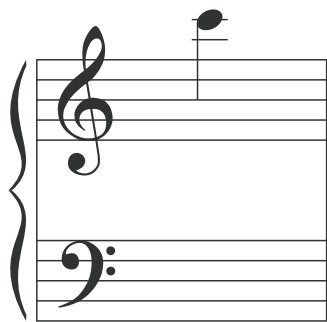
### Mad Minute

- Shuffle the deck, then take the top 10 cards.
- Set a timer for 60 seconds.
- For each card, play the correct note on your piano and name it out loud.
- See if you can make it through all 10 cards before your time is up.

---

★ **Level 2 (Hot Shot):** Try doing 15 cards in 60 seconds.

★ **Level 3 (Mega-Ultimate Master):** Try doing 20 cards in 60 seconds.



**A**

**B**

**C**

**E**

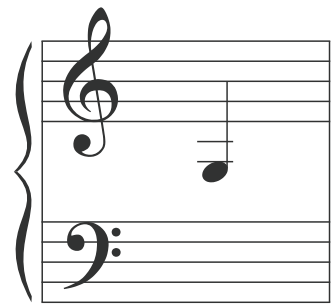
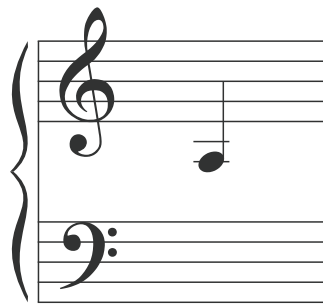
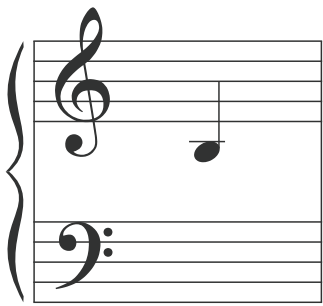
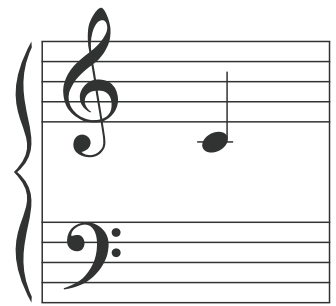
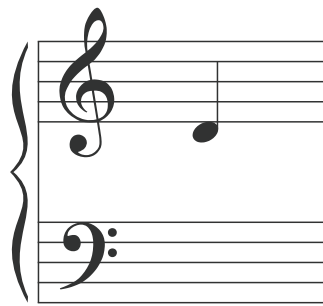
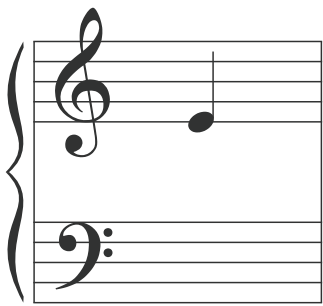
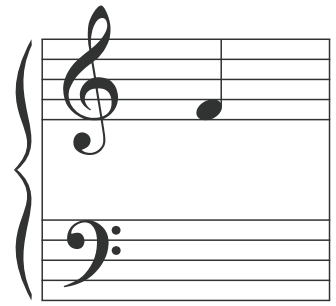
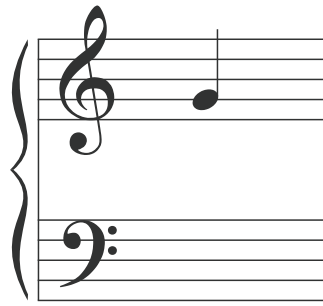
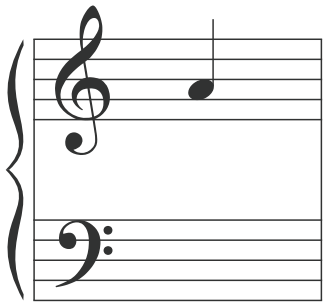
**F**

**G**

**B**

**C**

**D**



**F**

**G**

**A**

**C**

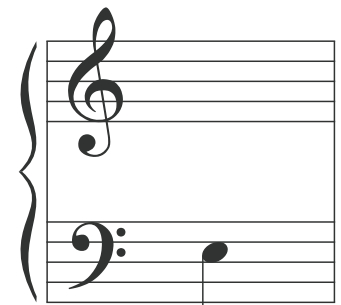
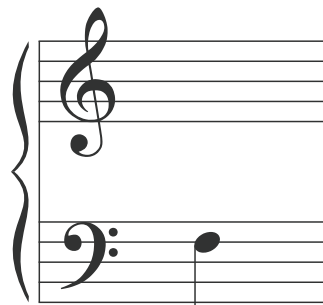
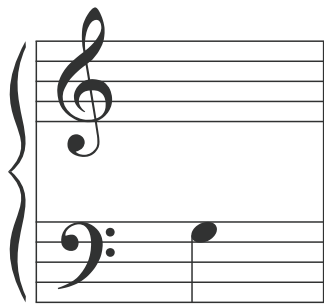
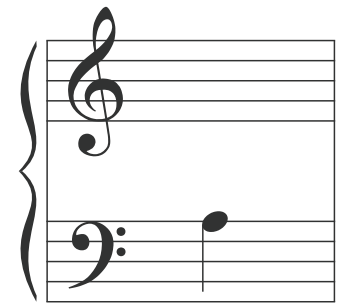
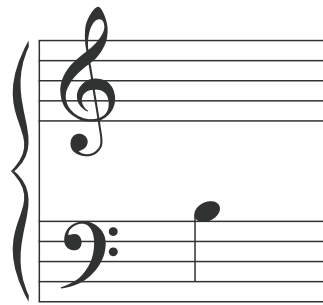
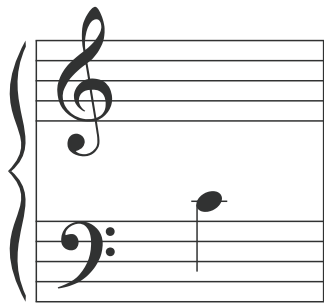
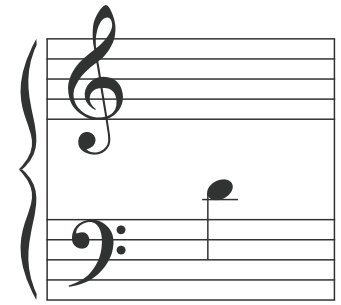
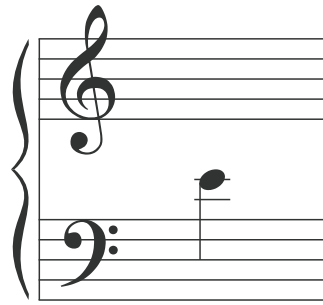
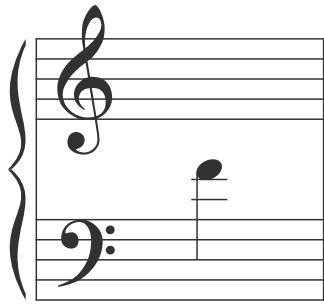
**D**

**E**

**G**

**A**

**B**



**D**

**E**

**F**

**A**

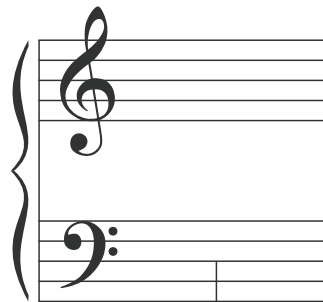
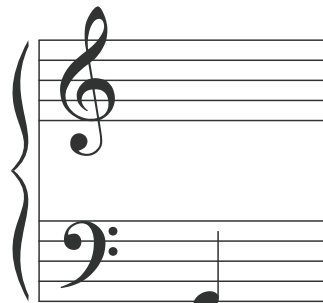
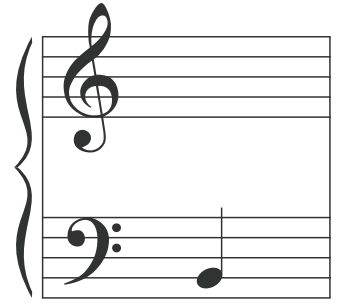
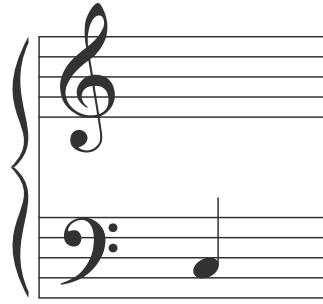
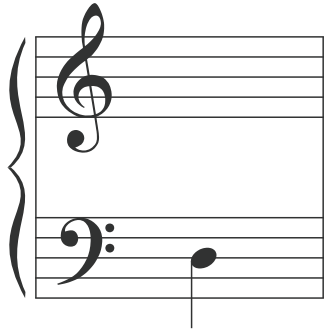
**B**

**C**

**E**

**F**

**G**





**B**

**C**

**D**

**F**

**G**

**A**

**C**

**D**

**E**