

Leprechaun Color By Note

Early Elementary // Units 3-4



4 Sixteenth Notes "ti-ki-ti-ki" = Yellow



2 Eighth Notes "ti-ti" = Green



1 Dotted Eighth Note + 1 Sixteenth Note "tim-ki" = Black



Quarter Note "ta" = Light Blue



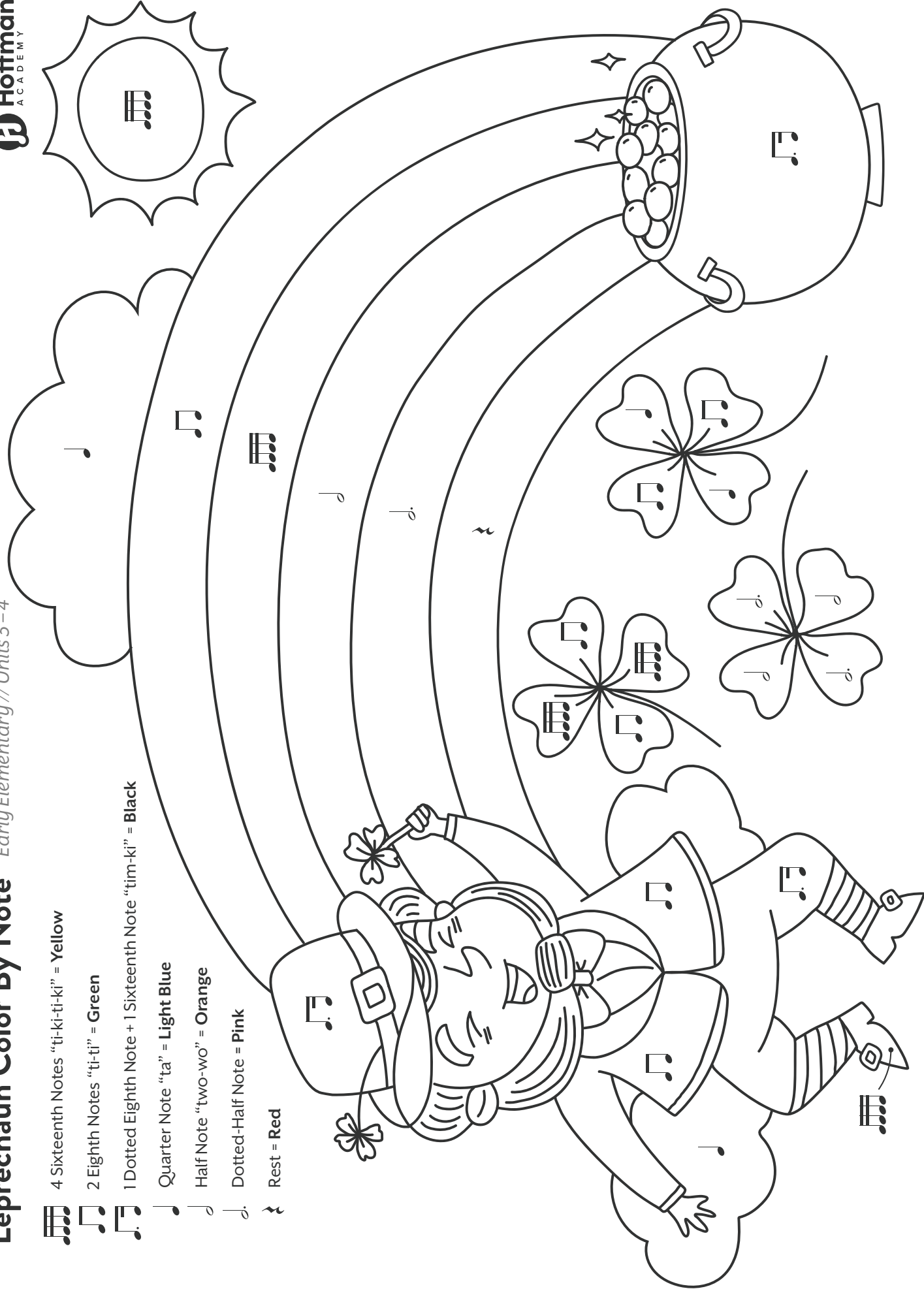
Half Note "two-wo" = Orange



Dotted-Half Note = Pink

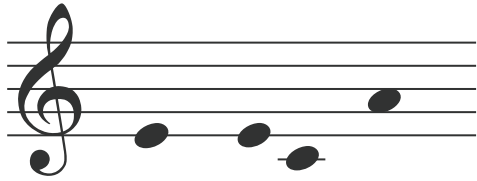


Rest = Red

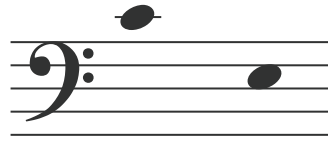


Leprechaun Mystery Words

Early Elementary // Units 3 - 4

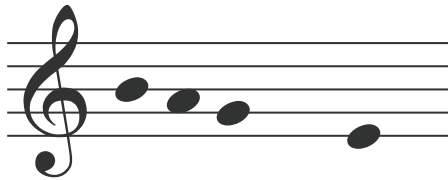


L _ pr _ _ h _ un

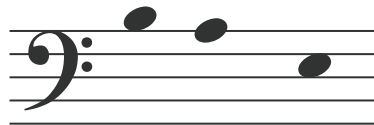


_ lov _ r

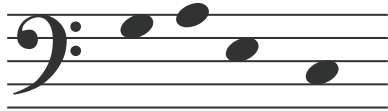
Top o' the mornin' to ye!
Can you help me figure
out these words?



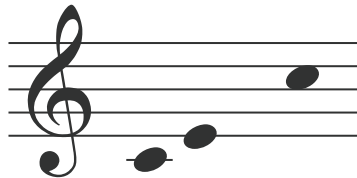
_ _ _ _ pip _ s



_ l _ rn _ y



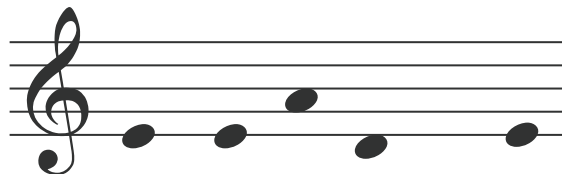
_ _ _ _ li _



_ _ _ _ lti _



_ r _ _ _ n



_ m _ r _ l _ l _ sl _



Leprechaun Note Walk

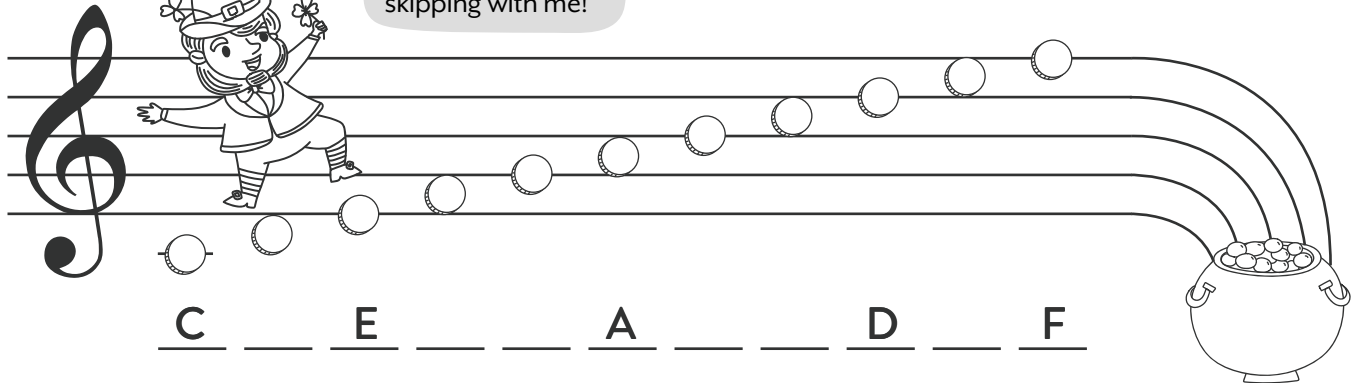
Early Elementary // Units 3-8

Stepping Up



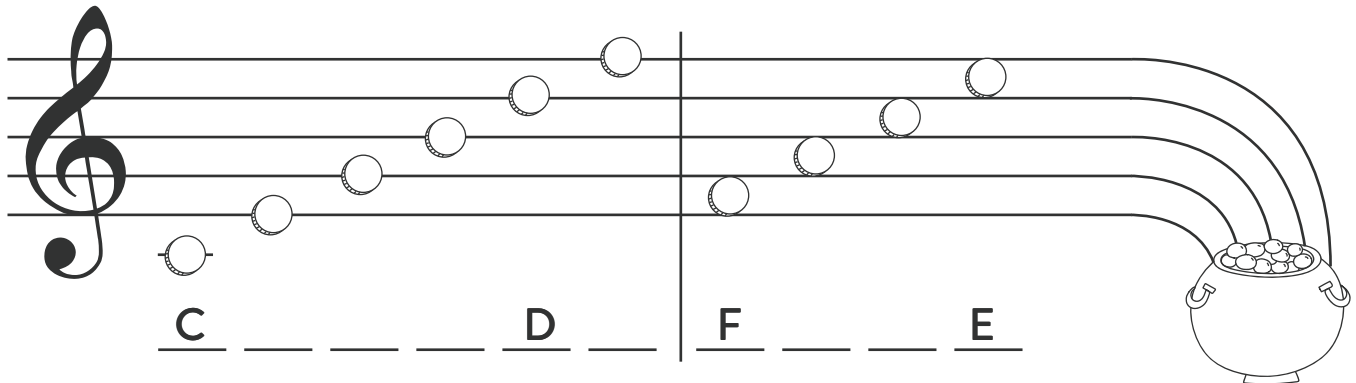
Come stepping and skipping with me!

Help me find me gold!



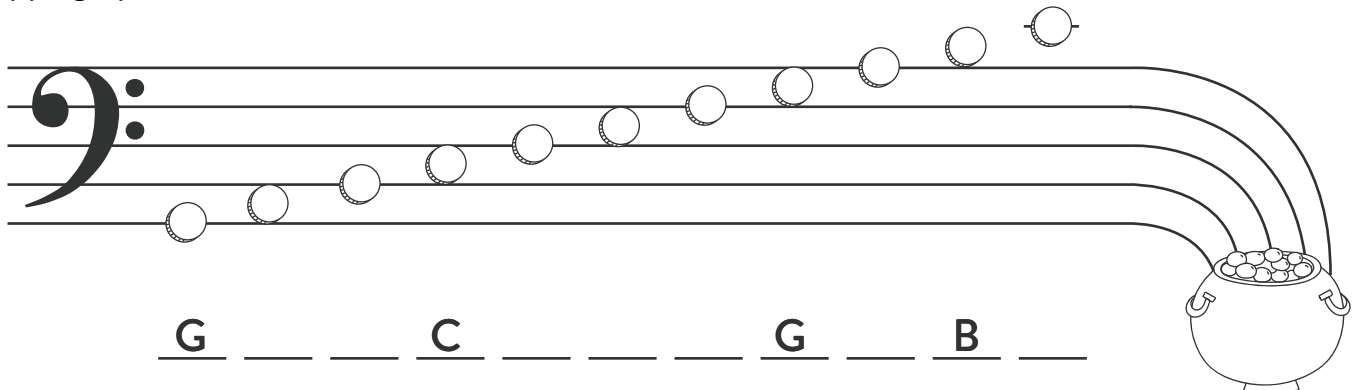
C _ _ _ E _ _ _ A _ _ _ D _ _ _ F _ _ _

Skipping Up



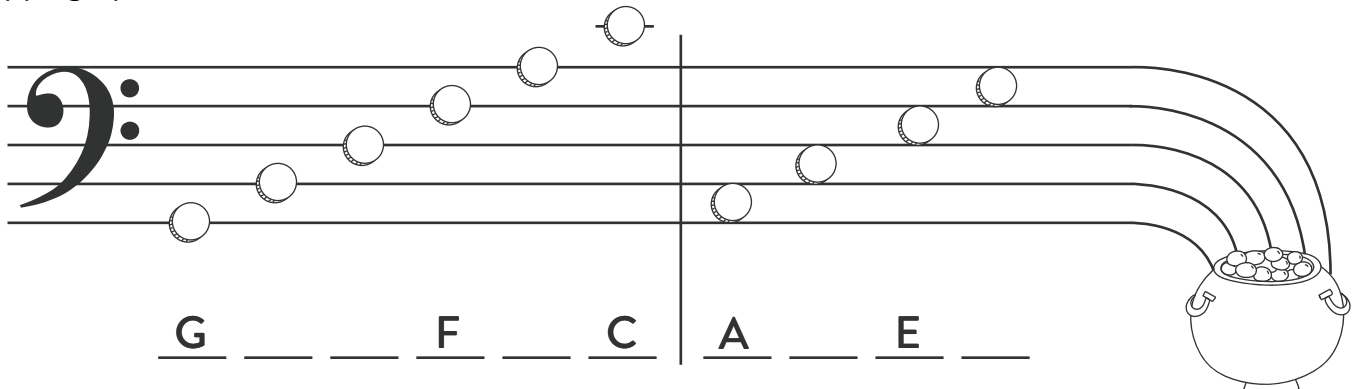
C _ _ _ D _ _ _ | F _ _ _ E _ _ _

Stepping Up



G _ _ _ C _ _ _ G _ _ _ B _ _ _

Skipping Up



G _ _ _ F _ _ _ C _ _ _ | A _ _ _ E _ _ _


St. Patrick's Day Packet Answer Key

Early Elementary // Units 3-4

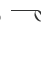
Leprechaun Color By Note

 4 Sixteenth Notes "ti-ki-ti-ki" = Yellow

 2 Eighth Notes "ti-ti" = Green

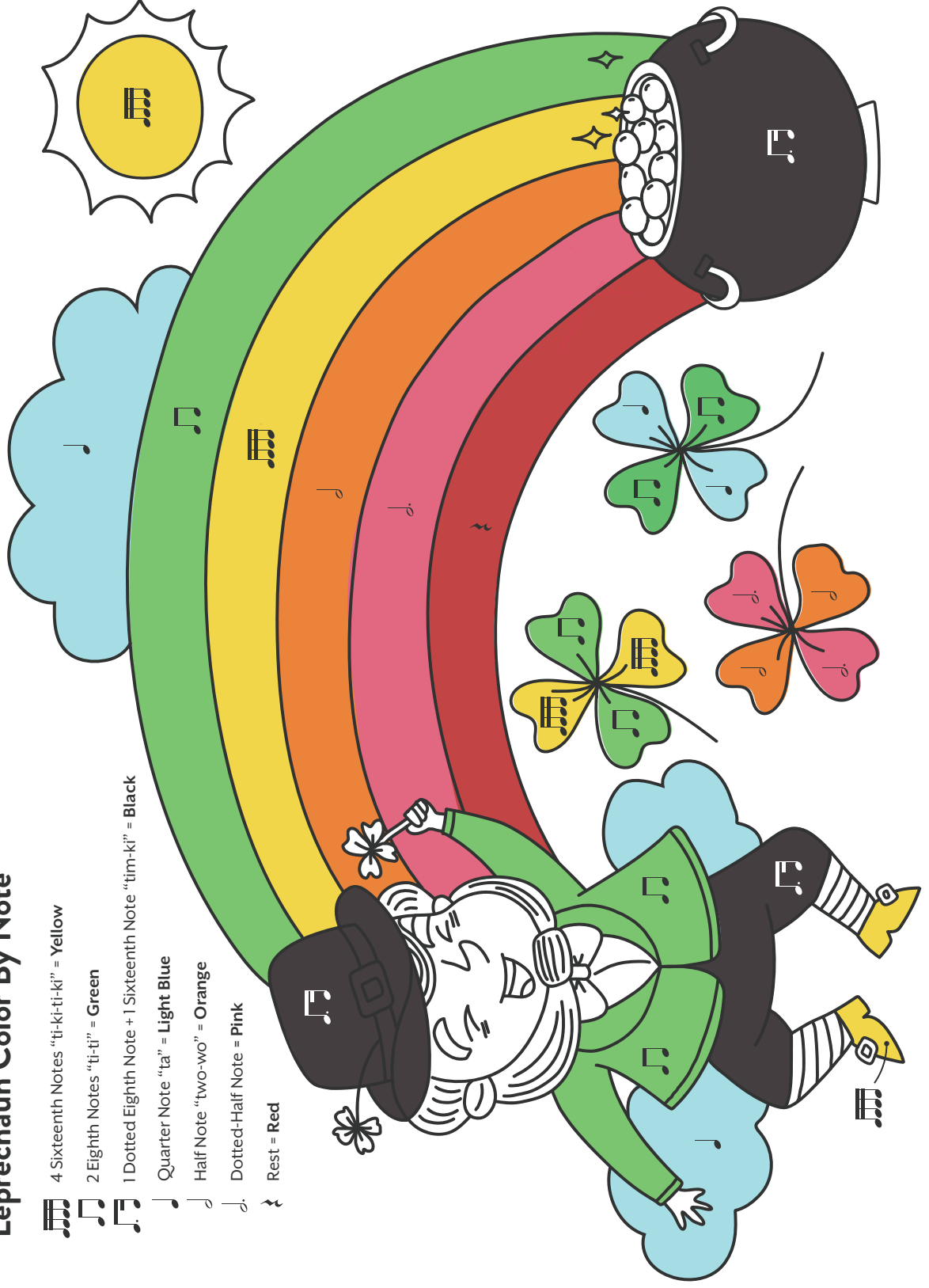
 1 Dotted Eighth Note + 1 Sixteenth Note "tim-ki" = Black

 Quarter Note "ta" = Light Blue

 Half Note "two-wo" = Orange

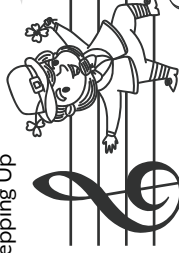
 Dotted-Half Note = Pink

 Rest = Red



Leprechaun Note Walk

Stepping Up



Come stepping and skipping with me!

Help me find me gold!

C D E F G A B C D E F

Skipping Up

C E G B D F F A C E

Stepping Up

G A B C D E F G A B C

Skipping Up

G B D F A C A C E G

Leprechaun Mystery Words

L e p r e c h a un

C l o v e r

B a g p i p e s

B l a r n e y

G a e l i c

C e l t i c

G r e e n

E m e r a l d l s e